



4 Mount Avenue

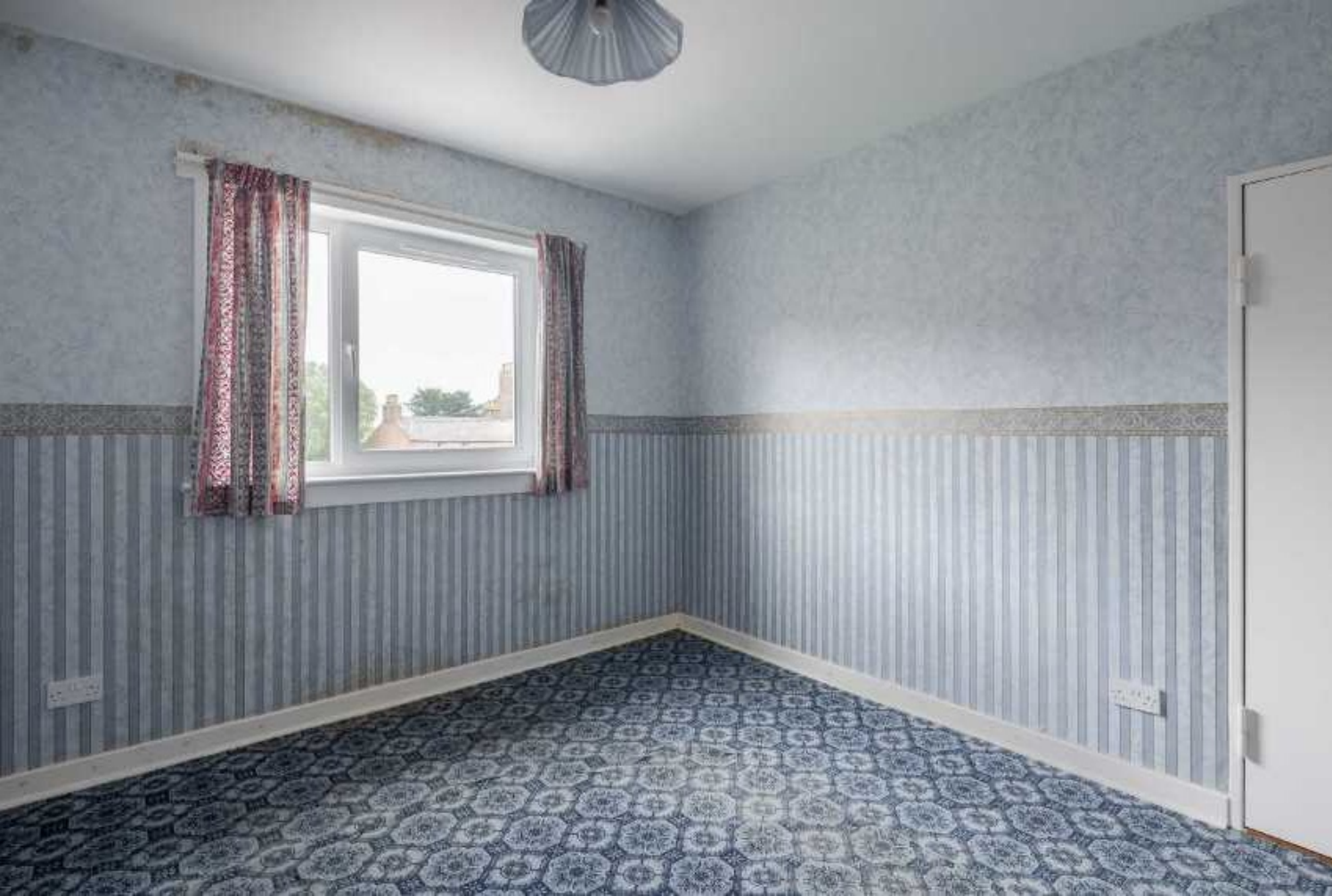
| Montrose | DD10 8NU

Thorntons 
The right way to move



Spacious Main Door Top Floor Flat situated in a popular residential area convenient for public transport, shopping facilities and recreational amenities.

The property which benefits from double glazing and gas central heating comprises Entrance Hall with front facing window, stairs leading to upper hall, storage cupboard, door giving access to flat. Hall with all accommodation leading off, hatch giving access to attic space, 2 storage cupboards. Bright spacious Lounge with front facing window, wall mounted gas fire, ample space for occasional furniture, Dining Kitchen with both wall and base units, matching work surfaces, stainless steel sink unit and drainer, ample space for dining table, 2



The property which benefits from double glazing and gas central heating comprises Entrance Hall with front facing window, stairs leading to upper hall, storage cupboard, door giving access to flat. Hall with all accommodation leading off, hatch giving access to attic space, 2 storage cupboards. Bright spacious Lounge with front facing window, wall mounted gas fire, ample space for occasional furniture, Dining Kitchen with both wall and base units, matching work surfaces, stainless steel sink unit and drainer, ample space for dining table, 2 storage cupboards, window. 2 double Bedrooms with fitted wardrobes, window. Bathroom fitted with 3 piece suite and shower, window. Externally there is a garden area to both the front and rear.

Viewing is highly recommended.

EPC C



- Main Door Top Floor Flat
- Spacious Accommodation
- Entrance Hall, Upper Floor
- Hall, Lounge, Dining Kitchen
- 2 Double Bedrooms, Bathroom
- Double Glazing, Gas C.H
- Popular Residential Area
- Garden Front And Rear
- Viewing Highly Recommended



| | |
|-----------------|-------------------------------|
| Lounge | 17'0 x 12'4 5.18m x 3.76m |
| Dining/ Kltchen | 12'2 x 11'1 3.71m x 3.38m |
| Bedroom | 12'2 x 11'0 3.71m x 3.35m |
| Bedroom | 12'2 x 10'11 3.71m x 3.33m |
| Bathroom | 8'7 x 4'11 2.62m x 1.50m |



aspc êspc fifêspc p̂spc t̂spc ŝpc

