



20 John Street

| Montrose | DD10 8LZ

Thorntons 
The right way to move



Spacious first floor maisonette situated within a popular residential area convenient for a wide range of shopping amenities, public transport including local train station and recreational facilities.

The property which offers well appointed accommodation over two levels benefits from security entry system, double glazing and gas central heating comprises hall with storage cupboard and stairs leading to upper floor. Bright spacious lounge with front facing window, feature fireplace, ample space for occasional furniture. Dining kitchen with both wall mounted and base units, contrasting work surfaces and matching breakfast bar. Oven, hob, extractor, fridge, freezer, plumbing for automatic washing machine, storage cupboard and



The property which offers well appointed accommodation over two levels benefits from security entry system, double glazing and gas central heating comprises hall with storage cupboard and stairs leading to upper floor. Bright spacious lounge with front facing window, feature fireplace, ample space for occasional furniture. Dining kitchen with both wall mounted and base units, contrasting work surfaces and matching breakfast bar. Oven, hob, extractor, fridge, freezer, plumbing for automatic washing machine, storage cupboard and rear facing window. Upper hall with Velux window. Two double bedrooms; one with mirror fronted wardrobe and one with storage cupboard. Bathroom with three piece suite, separate shower cubicle, heated towel rail, Velux window.

Externally there is a communal area to the rear.

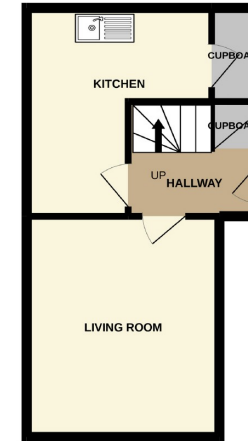
Viewing is highly recommended. EPC: E



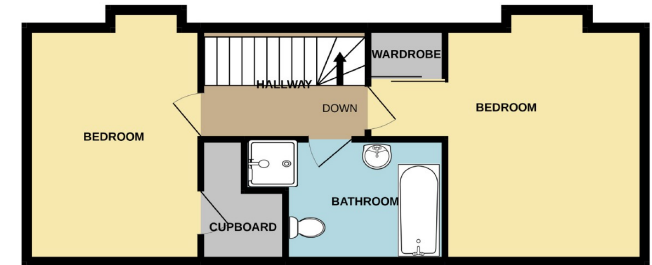
- Spacious Top Floor Maisonette
- Popular Residential Area
- Accommodation Over 2 Levels
- Hall, Lounge, Dining Kitchen
- 2 Double Bedrooms, Bathroom
- Double Glazing, Gas CH
- Ideal 1st Time Purchase
- Viewing Highly Recommended
- EPC: E

Lounge	12'7 x 11'9 3.84m x 3.58m
Dining Kitchen	12'0 x 11'6 3.66m x 3.51m
Bedroom	17'2 x 14'2 awp 5.23m x 4.32m awp
Bedroom	14'6 x 8'9 4.42m x 2.67m
Bathroom	9'9 x 6'5 2.97m x 1.96m

FIRST FLOOR



ATTIC FLOOR



Whilst every attempt has been made to ensure the accuracy of the floorplan contained here, measurements of doors, windows, rooms and any other items are approximate and no responsibility is taken for any error, omission or mis-statement. This plan is for illustrative purposes only and should be used as such by any prospective purchaser. The services, systems and appliances shown have not been tested and no guarantee as to their operability or efficiency can be given.
Made with Metropix ©2021

aspc êspc fifespc pspc tspc spc scotland

