



## Harley Street, W1G

£695 Per week

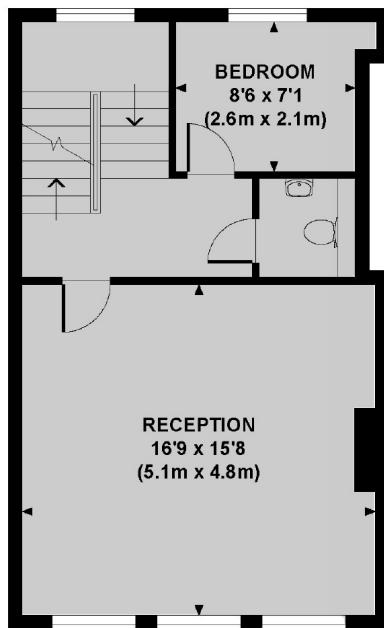
A newly refurbished two bedroom apartment on the third floor of a period conversion in Marylebone. This bright apartment has a large living room, separate kitchen and guest w/c.

In the heart of Marylebone Village, Wimpole Street is served by the vibrant shops, bars and restaurants of Marylebone High Street including the popular Coco Momo.

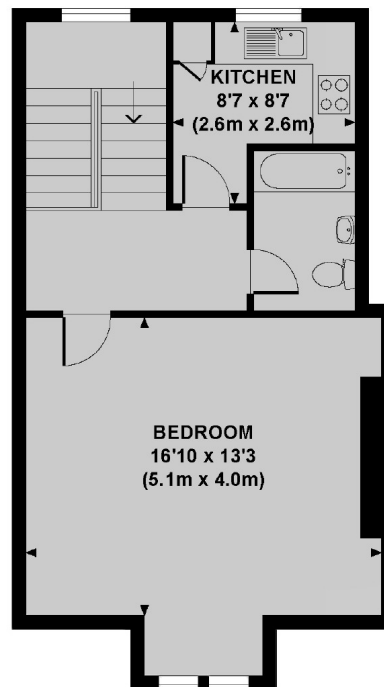
### Features

Two Bedroom  
One Bathroom  
Third Floor  
Split Level  
Separate Kitchen  
Marylebone Village

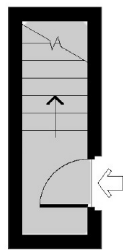
## Harley Street, London, W1G



THIRD FLOOR



FOURTH FLOOR



SECOND FLOOR

Approx. gross internal area  
950 Sq Ft. / 88.3 Sq M.

### Contact

To arrange a viewing call our office on the number below or visit our website.



Energy Rating: F. We aim to make our particulars both accurate and reliable. However they are not guaranteed; nor do they form part of an offer or contract. If you require clarification on any points then please contact us, especially if you're traveling some distance to view. Please note that appliances and heating systems have not been tested and therefore no warranties can be given as to their good working order.