



Devonshire Close, W1G

£4,595,000

Dexters



Devonshire Close, London, W1G

A mews house in the heart of Marylebone. Accessed by a cul-de-sac the house has four bedrooms, four bathrooms, integral garage and a roof terrace.

This spacious Mews house offers accommodation perfectly suited for entertaining. The top floor is a large open plan reception area with French windows opening onto a private west facing terrace.

On the second floor there is a master bedroom with contemporary en-suite bathroom, two further double bedrooms and a family bathroom.

The ground floor holds the fourth bedroom with en-suite, a separate utility room and generous integral garage.

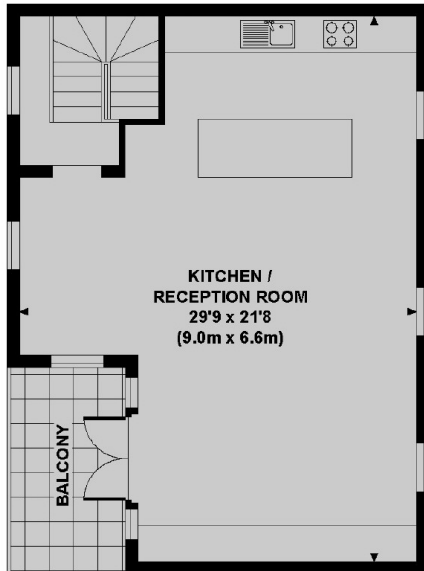
Devonshire Close is in the heart of Marylebone Village with a selection of shops, bars and restaurants.

Features

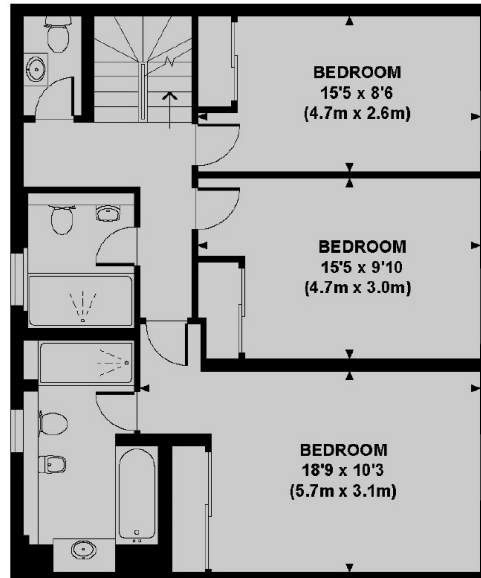
- Four Bedrooms
- Four Bathrooms
- Reception/Kitchen
- Private Roof Terrace
- Integral Garage
- Mews House



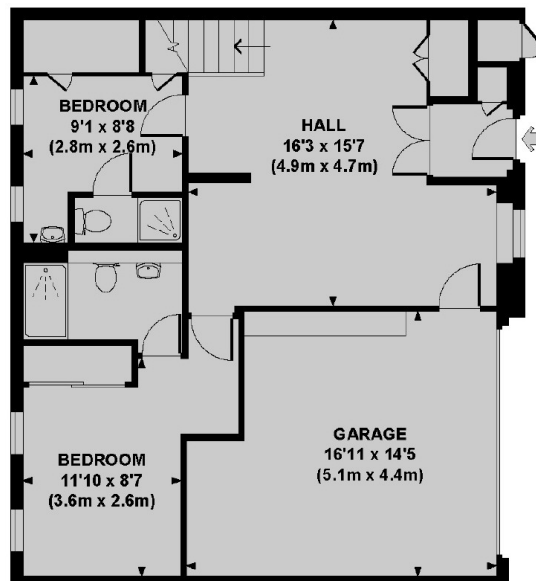
Devonshire Close, London, W1G



SECOND FLOOR



FIRST FLOOR



GROUND FLOOR

DEVONSHIRE CLOSE, W1G

Approx. gross internal area

2098 Sq Ft. / 195.1 Sq M.

Dexters

Marylebone
53-55 Weymouth Street,
London, W1G 8NJ
Sales
020 7224 5544

Energy Rating: D. We aim to make our particulars both accurate and reliable. However they are not guaranteed; nor do they form part of an offer or contract. If you require clarification on any points then please contact us, especially if you're traveling some distance to view. Please note that appliances and heating systems have not been tested and therefore no warranties can be given as to their good working order.

RICS | Regulated
Estate Agent
and Letting Agent

dexters.co.uk