



Gloucester Place, W1U

£660 Per week

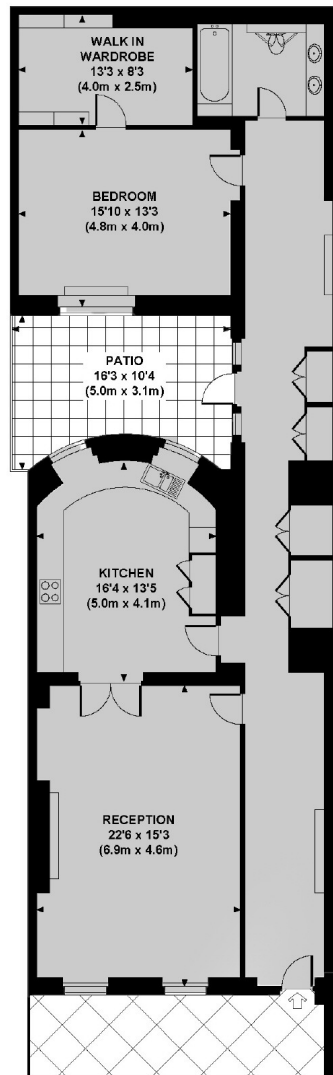
An enormous one bedroom, one bathroom apartment on the lower ground floor of a period building. The apartment has wooden floors, private outside space and a walk-in wardrobe, as well as good storage throughout the property.

Gloucester Place is a block away from the shops, bars and restaurants of Baker Street. Madame Tussauds and The Sherlock Holmes Museum are also close by.

Features

- One Bedroom
- One Bathroom
- Wooden Floors
- Outside Space
- Storage
- The Portman Estate

Gloucester Place, London, W1U



LOWER GROUND FLOOR

GLOUCESTER PLACE, W1U

Approx. gross internal area
1451 Sq Ft. / 135 Sq M.

Contact

To arrange a viewing call our office on the number below or visit our website.



Energy Rating: C. We aim to make our particulars both accurate and reliable. However they are not guaranteed; nor do they form part of an offer or contract. If you require clarification on any points then please contact us, especially if you're traveling some distance to view. Please note that appliances and heating systems have not been tested and therefore no warranties can be given as to their good working order.