

Great Cumberland Place, W1H

£560 Per week

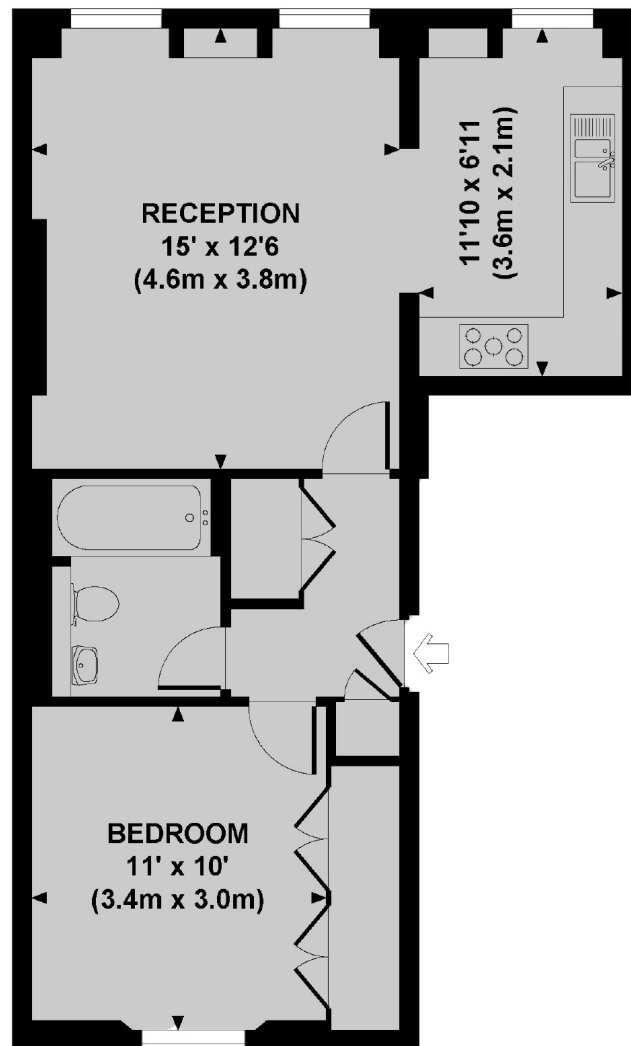
This one double bedroom apartment is located on the second floor of a period conversion on Great Cumberland Place, with an open plan living room / kitchen, and a separate modern bathroom.

Great Cumberland Place is served by the boutique shops and restaurants of New Quebec Street, including the renowned Mae Deli.

Features

Period Conversion
Open Plan
One Double Bedroom
Lots Of Storage
Wood Flooring
The Portman Estate

Great Cumberland Place, London, W1H



SECOND FLOOR

Approx. gross internal area
516 Sq Ft / 48 Sq M.

Contact

To arrange a viewing call our office on the number below or visit our website.



Energy Rating: C. We aim to make our particulars both accurate and reliable. However they are not guaranteed; nor do they form part of an offer or contract. If you require clarification on any points then please contact us, especially if you're traveling some distance to view. Please note that appliances and heating systems have not been tested and therefore no warranties can be given as to their good working order.