



Chiltern Street, W1U

£1,600,000

Dexters



Chiltern Street, London, W1U

This two bedroom, two bathroom apartment is on the first floor of a red brick mansion building called Portman Mansions located on the 'world famous' Chiltern Street in Marylebone Village.

The apartment has been professionally and stylishly refurbished to an exceptional standard. The bright reception room overlooks Chiltern Street with two floor-to-ceiling bay windows and feature fireplace. The modern, fully integrated kitchen has excellent storage and an attractive marble worktop.

The master double bedroom has a bright en suite bathroom and walk-in wardrobe. The good sized second bedroom has built-in storage and use of a second bathroom accessed via the hallway.

Residents of Portman Mansions further benefit from a 24 hour porter and gym.

The buildings have been beautifully maintained to showcase the Edwardian architecture by the active management association. Portman Mansions is within half a mile to Baker Street Underground Station and the open spaces of Regent's Park.

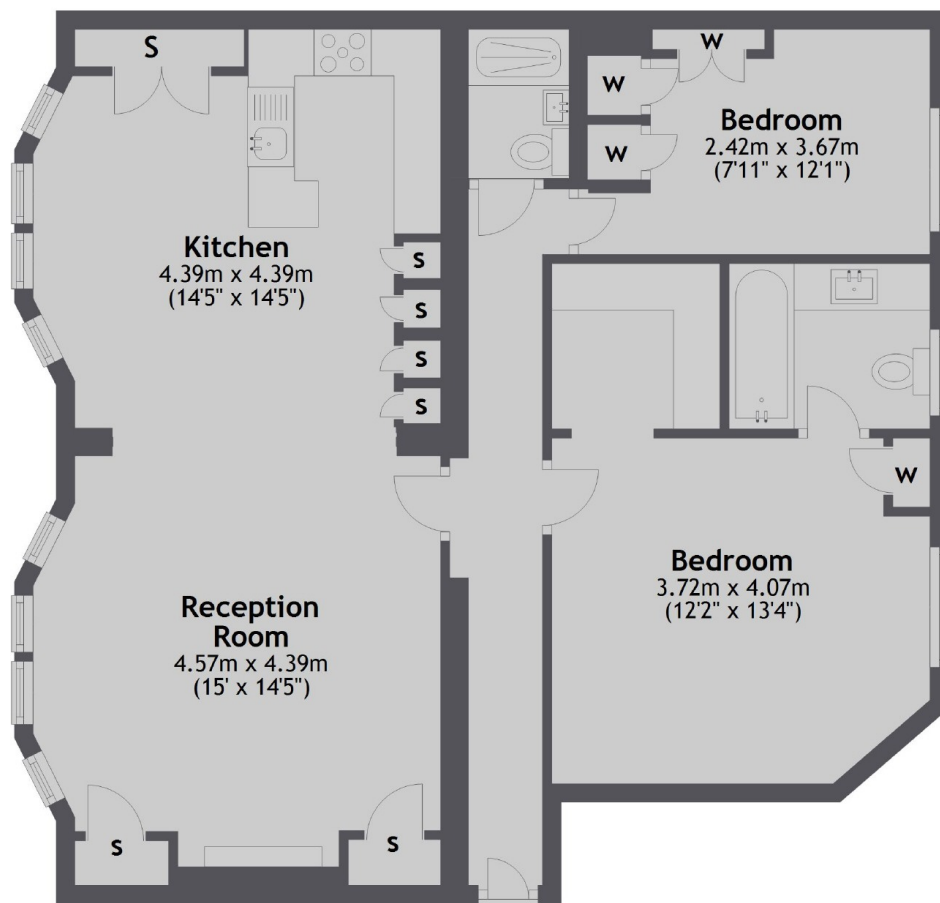
Features

First Floor
Porter
Excellent Condition
Two Bedroom
Two Bathroom
Residents Gym



Chiltern Street,
London, W1U

First Floor



Total area: approx. 81.7 sq. metres (879.7 sq. feet)

Dexters

Marylebone
53-55 Weymouth Street,
London, W1G 8NJ
Sales
020 7224 5544

Energy Rating: TBC. We aim to make our particulars both accurate and reliable. However they are not guaranteed; nor do they form part of an offer or contract. If you require clarification on any points then please contact us, especially if you're traveling some distance to view. Please note that appliances and heating systems have not been tested and therefore no warranties can be given as to their good working order.

RICS | Regulated
Estate Agent
and Letting Agent

dexters.co.uk