



Harrowby Street, W1H

£1,100,000

Dexters



## Harrowby Street, London, W1H

This two bedroom apartment is situated on the second floor, with lift, of the well-regarded red brick mansion block; Marble Arch Apartments. The apartment benefits from a secure parking space.

The apartment is ideally positioned, overlooking the quiet Harrowby Street. The master bedroom has an en suite bathroom and the second double bedroom has plenty of built-in storage.

This apartment further benefits from a secure parking space, large enough for two small cars, at the rear of the building. There is also a locked storage cupboard in the basement for exclusive use.

Marble Arch Apartments has been maintained and improved by a strong residents association. The very reasonable annual service charges provide permanent hot water supply, central heating and high security with 24 hour portage.

The property is offered on a long lease. Both Regent's and Hyde Park are within half a mile's walk, as are Baker Street, Marylebone and Marble Arch underground stations.

### Features

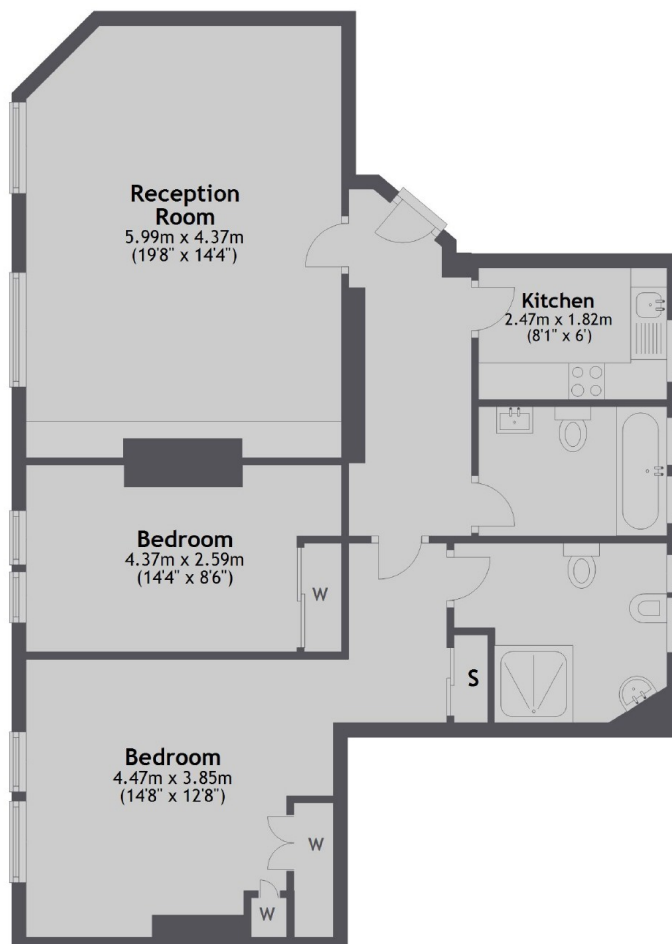
Parking Space  
Upper Floor  
Two Bedrooms  
Bright Reception  
Long Lease  
Lift And Porter





# Harrowby Street, London, W1H

## Second Floor



Total area: approx. 83.2 sq. metres (895.8 sq. feet)