



Montagu Mews North, W1H

£950 Per week

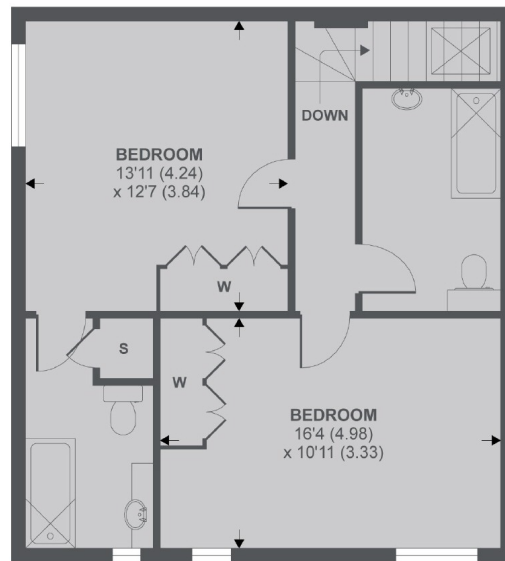
This two bedroom mews house is arranged over two floors, with a beautifully presented kitchen/breakfast room with wood flooring and modern appliances, a bright reception, two double bedrooms and two bathrooms.

Montagu Mews North is situated between Crawford Street and Montagu Place, close to Marylebone High Street and Baker Street Underground station.

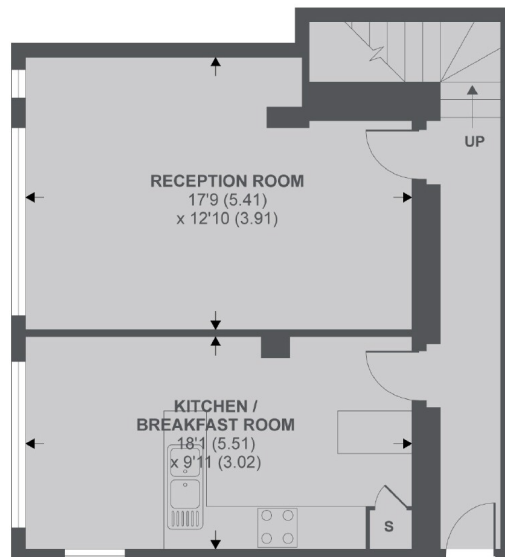
Features

- Mews House
- Two Bedrooms
- Two Bathrooms
- Eat-In Kitchen
- Separate Reception
- The Portman Estate

Montagu Mews North, London, W1H



1st Floor



Ground Floor

APPROX FLOOR AREA 1086 SQ.FT 100.8 SQ.M

Copyright nichecom.co.uk 2019 REF : 461799

Contact

To arrange a viewing call our office on the number below or visit our website.



Energy Rating: E. We aim to make our particulars both accurate and reliable. However they are not guaranteed; nor do they form part of an offer or contract. If you require clarification on any points then please contact us, especially if you're traveling some distance to view. Please note that appliances and heating systems have not been tested and therefore no warranties can be given as to their good working order.