



De Walden Street, W1G
£1,695,000

Dexters



De Walden Street, W1G

An upper floor maisonette situated in the heart of Marylebone with a remaining lease term of 41 years. With a private entrance from the street and access to a roof terrace.

The property benefits from a private entrance from the street and is located moments from the High Street. The first floor is occupied by a dual aspect reception room providing superb living and dining space, a separate kitchen and guest cloakroom.

Stairs lead to the second floor which comprises of two double bedrooms both with built in storage, a study and a bathroom. A roof terrace is accessed by an internal staircase and is perfect outdoor recreation space.

The flat is moments from the fashionable shops, bars and restaurants of Marylebone High Street. Neighbouring Fitzrovia, Soho and Mayfair are all nearby.

The property is well placed for transport links, including Bond Street, Oxford Circus and Baker Street stations which are all within half a mile away.

Features

- Private Entrance
- Access To A Roof Terrace
- Two Bedrooms
- Dual Aspect Reception
- Separate Kitchen
- Study/Third Bedroom

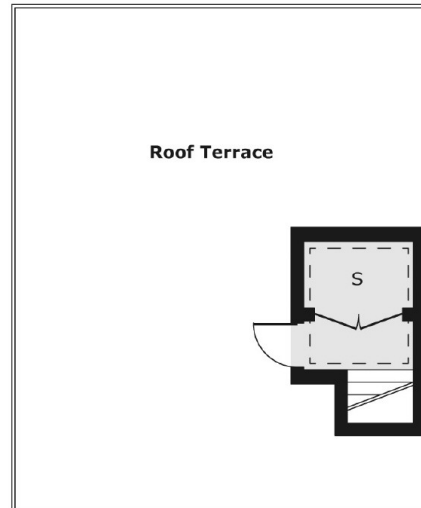






De Walden Street, London, W1G

Third Floor

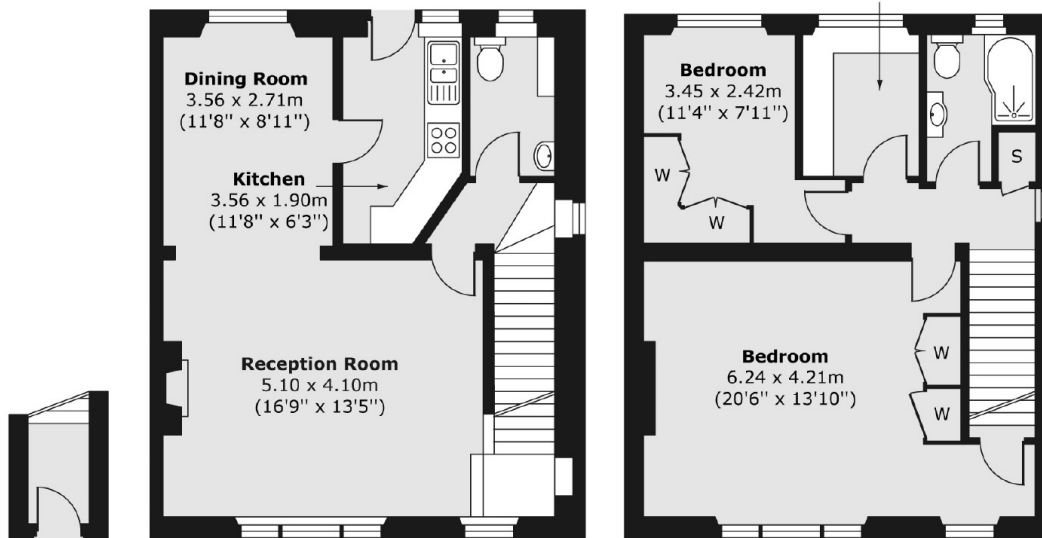


Raised Ground Floor

First Floor

Second Floor

Bedroom/ Study
2.32 x 1.85m
7'7" x 6'1"



Total area (approx.) 103.17 sq. m (1,111 sq. ft)

Roof terrace area (approx.) 46.07 sq. m (496 sq. ft)

Dexters

Marylebone
53-55 Weymouth Street
London
W1G 8NJ
Sales
020 7224 5544

Energy Rating: D. We aim to make our particulars both accurate and reliable. However they are not guaranteed; nor do they form part of an offer or contract. If you require clarification on any points then please contact us, especially if you're traveling some distance to view. Please note that appliances and heating systems have not been tested and therefore no warranties can be given as to their good working order.

RICS Regulated
Estate Agent
and Letting Agent

dexters.co.uk