

DEVONSHIRE CLOSE
MARYLEBONE

Dexters



Devonshire Close

Marylebone

An attractive mews house situated in
heart of Marylebone Village.



Offered for sale for the first time in over 40 years the home provides a quiet location towards the end of this secluded cobbled mews.

The entry level has a double garage which can accommodate two large cars, an office room and a guest cloakroom.

On the first floor, the drawing room occupies the full width of the house. With four large windows overlooking the mews, this room provides excellent entertaining and dining space.

At the rear of this level, there is a modern fitted kitchen which leads off from the drawing room.

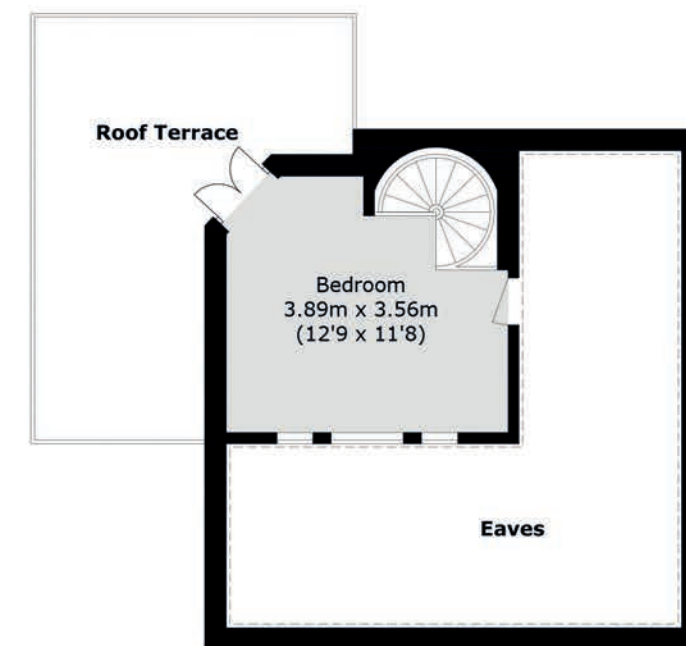
In addition, there is also a bedroom and a bathroom on this floor. The spiral staircase leads to the second floor bedroom which opens onto a roof terrace.

Located close to the open space of Regent's Park and with easy access to transport links including Bond Street, Oxford Circus and Great Portland Street stations.

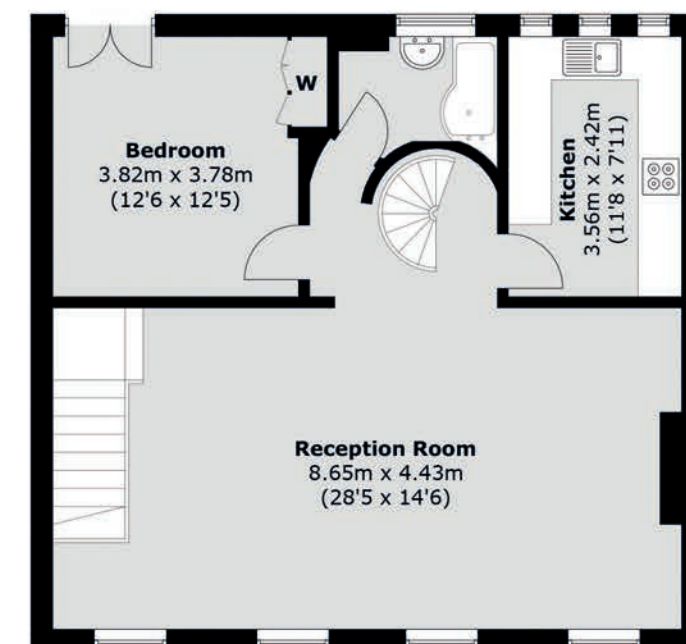
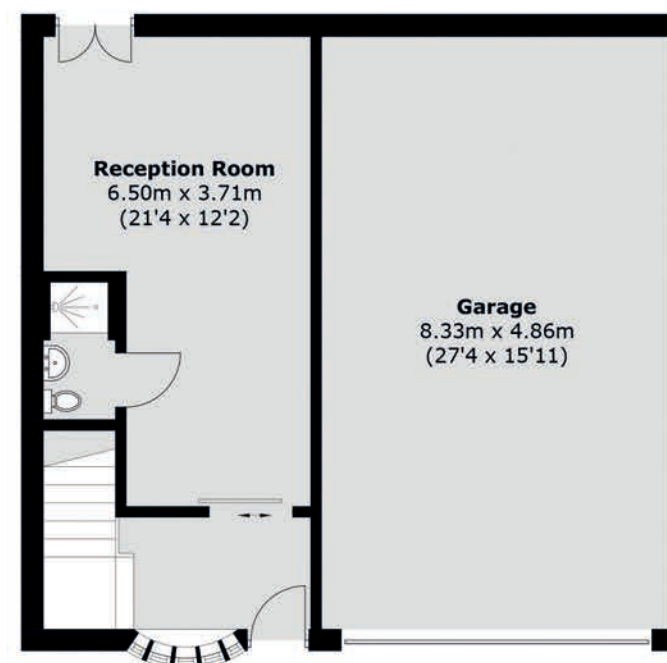
- Mews House
- Two Bedrooms
- Double Garage
- Roof Terrace
- Drawing Room
- Separate Kitchen
- Study
- 999 Year Lease From 1920







= Reduced headroom below 1.5m / 5'0



TOTAL APPROX. FLOOR AREA 1,248.5 SQ. FT (116 SQ. M)

GARAGE: 428.4 SQ. FT (39.8 SQ. M)

ROOF TERRACE: 194.8 SQ. FT (18.1 SQ. M)

Energy Rating: D. We aim to make our particulars both accurate and reliable. However they are not guaranteed; nor do they form part of an offer or contract. If you require clarification on any points then please contact us, especially if you're traveling some distance to view. Please note that appliances and heating systems have not been tested and therefore no warranties can be given as to their good working order.



Price on application

Dexters Marylebone
020 7224 5545

Dexters

dexters.co.uk