



Nutford Place, W1H

£1,850,000

Dexters



Nutford Place, W1H

A three-bedroom, three-bathroom apartment ideally located on the fourth floor of a period mansion block that is conveniently located for Selfridges, Park Lane and Hyde Park.

The building sits at the heart of The Portman Estate, one of London's great estates. This is a spectacular address to call home in an impeccable central London location. The building has recently refurbished communal areas and benefits from a porter, lift and CCTV.

The apartment has high ceilings, wood flooring and has an abundance of light. The reception room has two large windows and a fireplace whilst there is a modern kitchen with fitted appliances. The three double bedrooms all have fitted wardrobes and both the principal and second bedroom have en-suite shower rooms. Additionally, a bathroom serves bedroom three and as a guest cloakroom.

The transport links are excellent from nearby Marble Arch, Bond Street and Baker Street underground stations, Marylebone and Paddington train stations, and access to the West and Heathrow via the A40.

Features

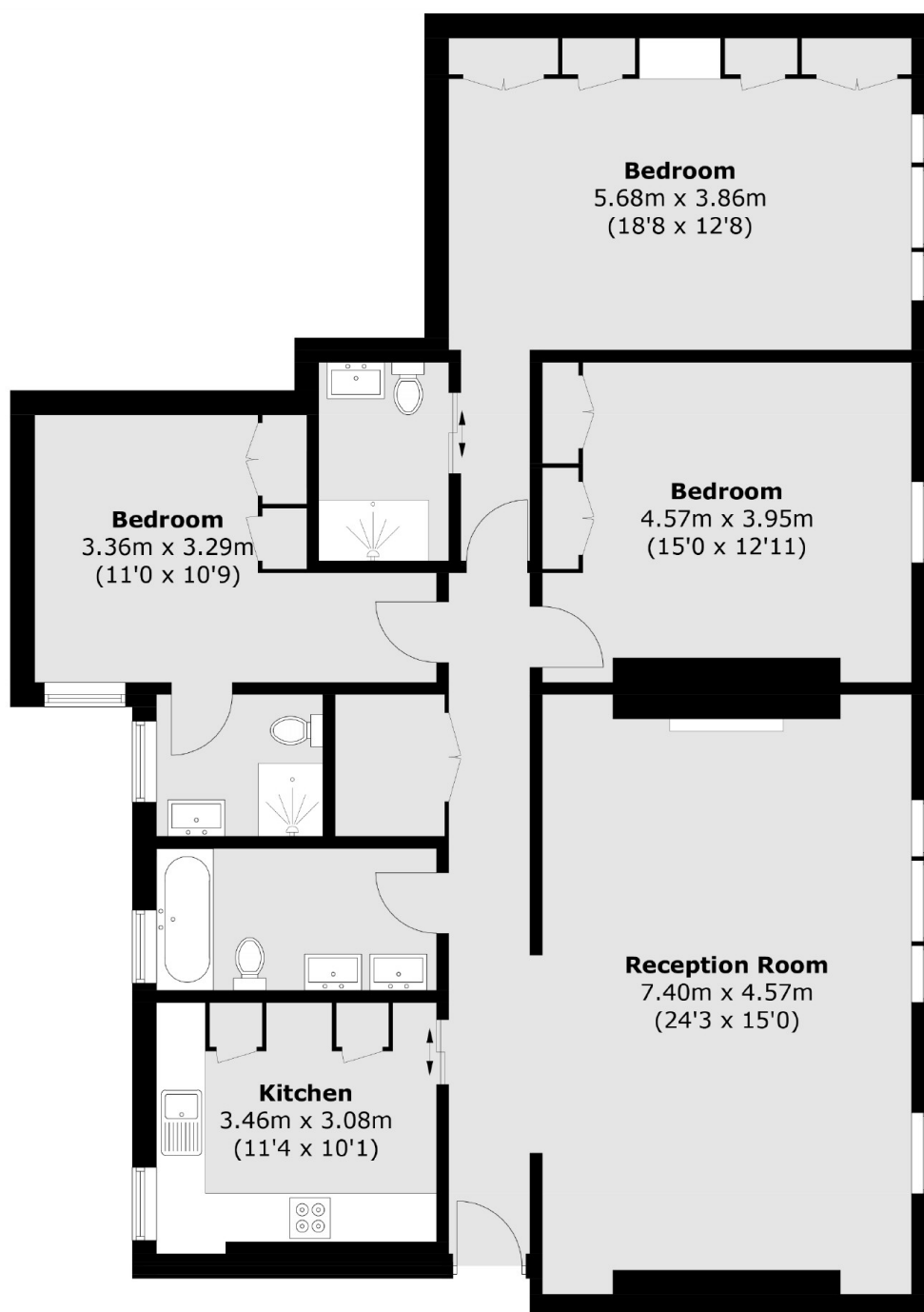
- Three Double Bedrooms
- Two En Suites
- Moments From Transport
- Passenger Lift
- Lease to 2127
- Fourth Floor







Nutford Place, London, W1H



Fourth Floor

Total area (approx.): 128.2 sq. m (1,380.2 sq. ft)

Dexters

Marylebone
53-55 Weymouth Street
London
W1G 8NJ
Sales
020 7224 5544

Energy Rating: C. We aim to make our particulars both accurate and reliable. However they are not guaranteed; nor do they form part of an offer or contract. If you require clarification on any points then please contact us, especially if you're traveling some distance to view. Please note that appliances and heating systems have not been tested and therefore no warranties can be given as to their good working order.

 **RICS** | Regulated
Estate Agent
and Letting Agent

[dexters.co.uk](https://www.dexters.co.uk)