



Montagu Mansions, W1U

£2,900,000

A large apartment arranged over two floors of a Marylebone red brick block. Currently arranged as four bedrooms, four reception rooms and a grand private entrance from the street.

Located South of Regents Park, accessible to Baker Street and Marylebone High Street. A rare opportunity to purchase a property of this size.

Features

Lease To 2987
Four Bedrooms
Four Reception Rooms
Private Entrance From Street
2975 Square Feet
Turn Key Condition



Montagu Mansions, W1U

The number of rooms could suit a large family with the requirement of multi generational occupancy or someone requiring work from home space in a Central London location.

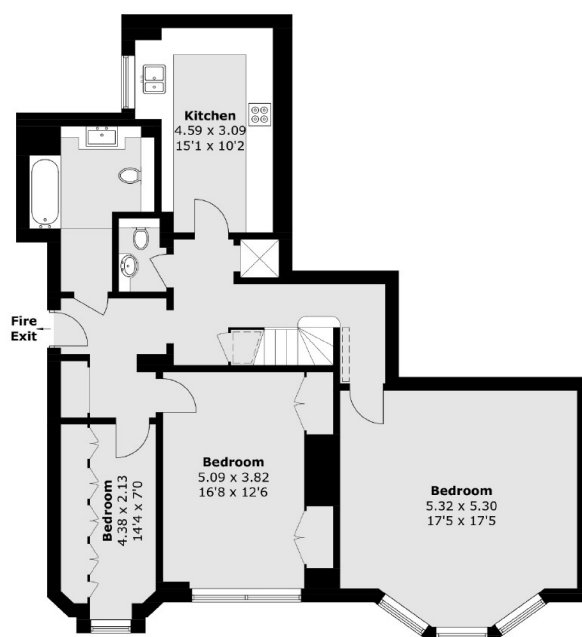
The property has been comprehensively refurbished in recent years and offers superb entertainment space with a grand reception room leading from the entrance hallway. The room is served by a kitchenette with a food service lift linked to the main kitchen. Offering 'turn key' finish and currently arranged with four bedrooms with a grand reception room, media room and dining room.



Montagu Mansions, London, W1U



Raised Ground Floor



Lower Ground Floor

Total area (approx.): 276.4 sq. m (2,975.1 sq. ft)