

**Devonshire Close**  
Marylebone, W1U

**Dexters**



## About the property

This two bedroom mews house is situated in a prime location within Marylebone Village. The house has been rebuilt behind the period facade to create a bespoke modern interior to an exacting standard.

On the ground floor you have a guest WC, open plan kitchen and reception room featuring hand made Norfolk Pammet tiles with underfloor heating and Gaggenau appliances.

On the first floor there is a double en suite bedroom and bathroom. The second floor has an electric opening skylight to both the bedroom and stairs, and there is a second bathroom off the landing.

Devonshire Close is one of Marylebone's most popular and sought after Mews, located between Portland Place and Marylebone High Street, which hosts an array of vibrant bars, cafes, restaurants and shops.



## Key features

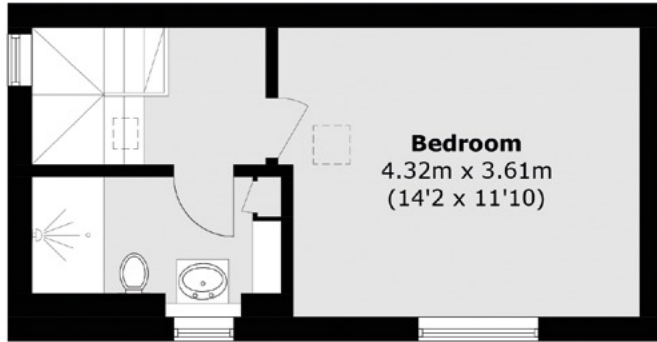
- Two Bedrooms
- Extensively Refurbished
- Bespoke Joinery
- Original Facade
- South Facing Aspect
- Mews House



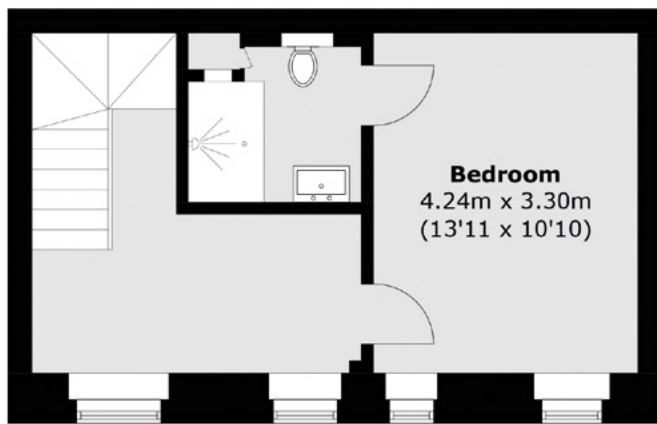




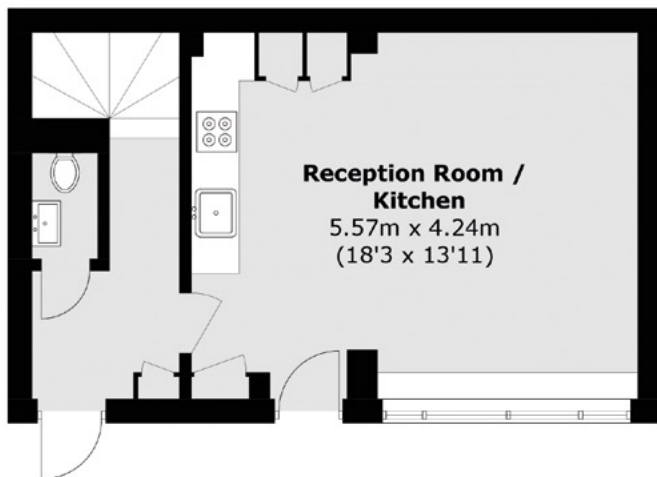




**Second Floor**



**First Floor**



**Ground Floor**

---

TOTAL APPROX. FLOOR AREA 1,040.8 SQ. FT (96.7 SQ. M)

Energy Rating: C. We aim to make our particulars both accurate and reliable. However they are not guaranteed; nor do they form part of an offer or contract. If you require clarification on any points then please contact us, especially if you're traveling some distance to view. Please note that appliances and heating systems have not been tested and therefore no warranties can be given as to their good working order.



Dexters Marylebone  
55 Weymouth Street  
London, W1G 8NJ  
020 7224 5545

**Dexters**