



## Radipole Road, SW6

### £2,250,000

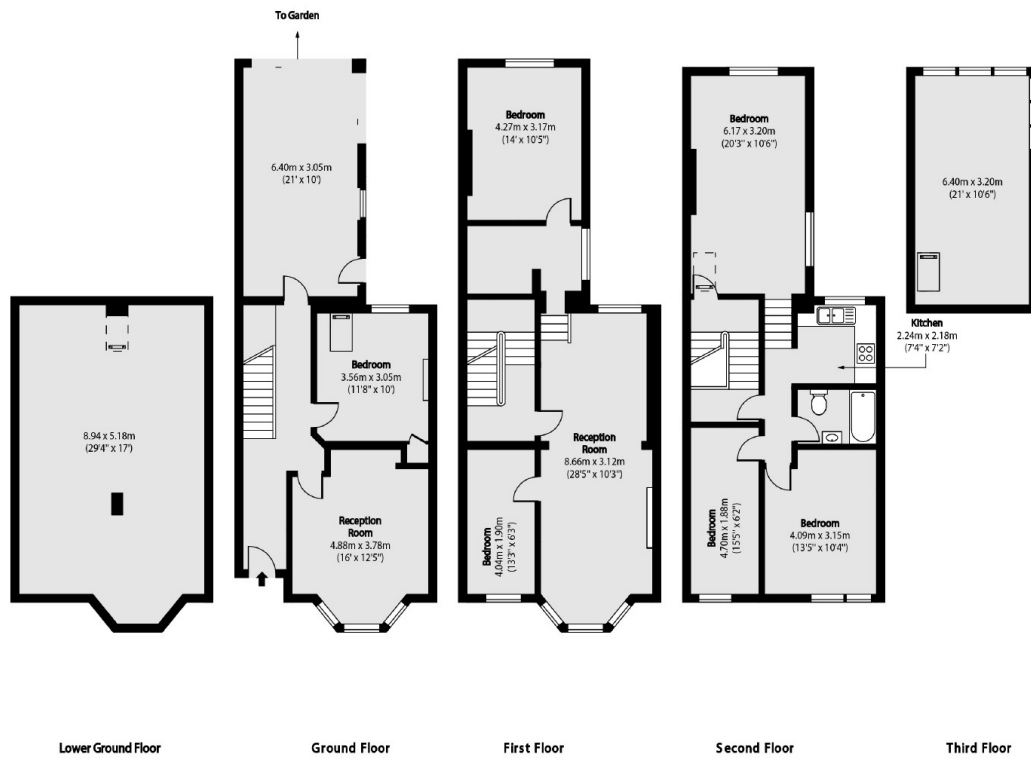
This is a wonderful opportunity to purchase an unmodernised family home with a large garden in the heart of Parsons Green. This property has excellent potential and provides a solid foundation for renovation and extension (STPP).

Radipole Road is off Fulham Road with Parsons Green station moments away. There are excellent bus routes and a selection of local amenities, bars, restaurants and boutique coffee shops all on your doorstep.

### Features

- Six Bedrooms
- One Bathroom
- Potential To Modernise
- Garden
- Victorian Mid Terrace
- Parsons Green

# Radipole Road, London, SW6



Total area (approx): 253.15 sq m (2725 sq. ft)