



## Caroline Place, W2

£2,600 Per week

**Dexters**



## Caroline Place, London, W2

A large five bedroom family house arranged over four floors with a large semi open plan kitchen reception room leading onto a rear private garden on the ground floor, three bathrooms, private front

A spacious five bedroom family house arranged over four floors, with large private front and rear gardens situated on the beautiful Caroline Place.

The property has a large semi open plan kitchen reception room leading onto a rear private garden on the ground floor, a large living room and an ensuite bedroom on the lower ground floor.

The first and second floors consist of four further bedrooms with plenty of storage and two bathrooms.

Situated within close proximity of the famous Kensington Gardens and all shops bars and restaurants of Queens Way with Bayswater Station only 0.3 miles away.

### Features

- Five Double Bedrooms
- Terraced House
- Three Bathrooms
- Wood Flooring
- Private Gardens
- Private Garage



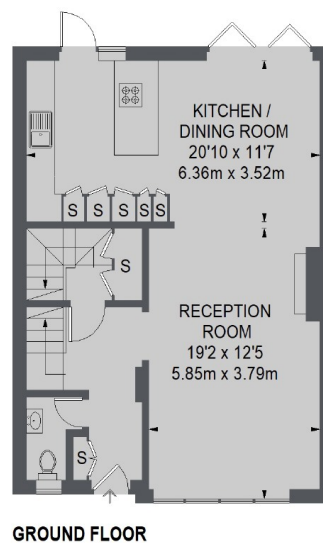
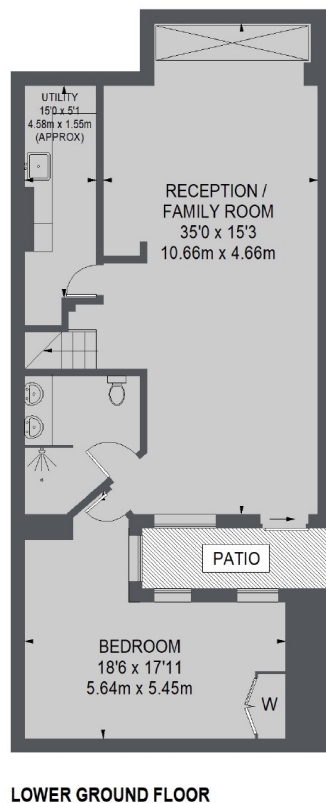
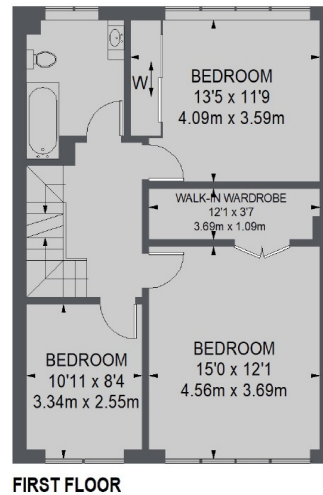
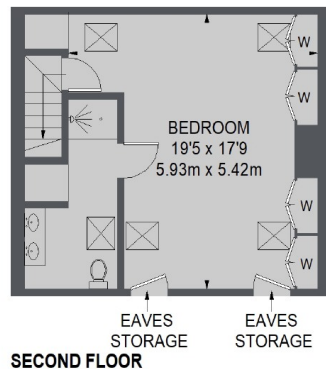








# Caroline Place, London, W2



TOTAL APPROX. FLOOR AREA  
(EXCLUDING EAVES STORAGE)  
2610 SQ. FT. ( 242.51 SQ. M.)

**Dexters**

Notting Hill  
121-123 Notting Hill Gate,  
Notting Hill, London, W11 3LB  
Lettings  
020 7792 0792

Energy Rating: C. We aim to make our particulars both accurate and reliable. However they are not guaranteed; nor do they form part of an offer or contract. If you require clarification on any points then please contact us, especially if you're traveling some distance to view. Please note that appliances and heating systems have not been tested and therefore no warranties can be given as to their good working order.

**RICS** Regulated  
Estate Agent  
and Letting Agent

[dexters.co.uk](http://dexters.co.uk)