



## Kensington Gardens Square, W2

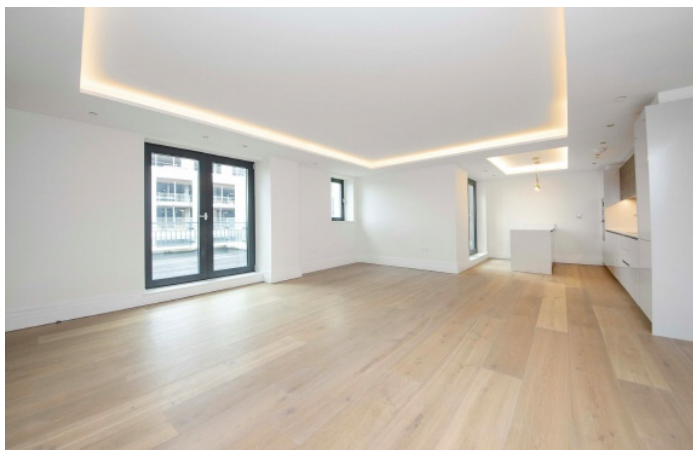
**£1,799** Per week

A luxury and contemporary one double bedroom apartment situated on the sixth floor of this prestigious new development. Ideally located on Kensington Gardens Square, just off Westbourne Grove in Notting Hill

The development is conveniently located a few steps from the local shops and boutiques of Notting Hill. Bayswater Tube Station is 0.2 miles from the property whilst Queensway is 0.3 miles and Notting Hill Gate is 0.7 miles.

### Features

- Air Cooling
- New Build
- Miele Appliances
- Moments from Notting Hill
- Hyde Park 0.5 Miles
- Underground Parking
- 24 Hour Concierge
- 6TH Floor



## Kensington Gardens Square, W2

The apartment further benefits include a generous two double bedrooms with built in storage and a large open plan living room and kitchen fully fitted with Miele appliances.



# Kensington Gardens Square, London, W2



Total area (approx.): 107.2 sq. m (1,153.9 sq. ft)  
Balcony area (approx.): 24.3 sq. m (261 sq. ft)

## Dexters

Notting Hill  
121-123 Notting Hill Gate  
London  
W11 3LB  
Lettings  
020 7792 0792

Energy Rating: B. We aim to make our particulars both accurate and reliable. However they are not guaranteed; nor do they form part of an offer or contract. If you require clarification on any points then please contact us, especially if you're traveling some distance to view. Please note that appliances and heating systems have not been tested and therefore no warranties can be given as to their good working order.

 **RICS** | Regulated  
Estate Agent  
and Letting Agent

[dexters.co.uk](https://www.dexters.co.uk)