



Elgin Crescent, W11

£634 Per week

A spacious and bright two double bedroom flat set within a well maintained mansion building located on the residential Elgin Crescent with wood flooring a large separate kitchen and access to communal gardens.

Convenient for the many local shops, bars and cafes of both Notting Hill Gate and Westbourne Grove and a short walk from Portobello Market.

Features

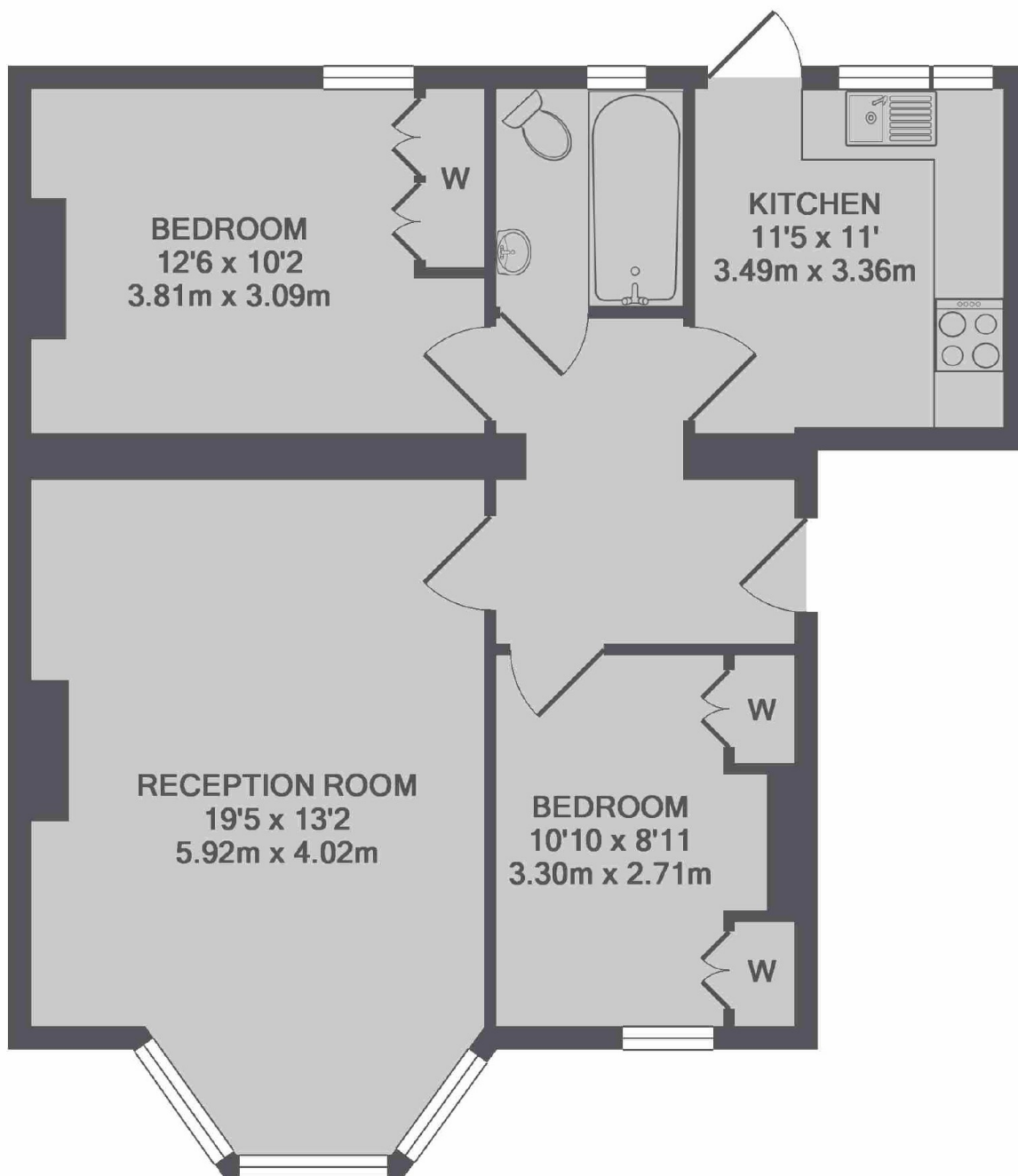
- Two Double Bedrooms
- High Ceilings
- Separate eat in Kitchen
- Communal Gardens
- Recently Refurbished
- Plenty Of Storage
- Professionally Managed
- Unfurnished



Elgin Crescent, W11



Elgin Crescent, London, W11



TOTAL APPROX. FLOOR AREA 680 SQ.FT. (63.1 SQ.M.)
Made with Metropix ©2017