



Ladbroke Gardens, W11

£2,076 Per week

Dexters



Ladbroke Gardens, W11

An impressive three bedroom apartment arranged over the top three floors of a well maintained period building benefitting from two bathrooms, a 440 sq ft dual aspect roof terrace and access to the beautiful, private Ladbroke gardens.

Ladbroke Gardens is ideally positioned within close proximity of the local amenities of Westbourne Grove and Notting Hill Gate with Portobello Road also less than 0.5 miles away.

Features

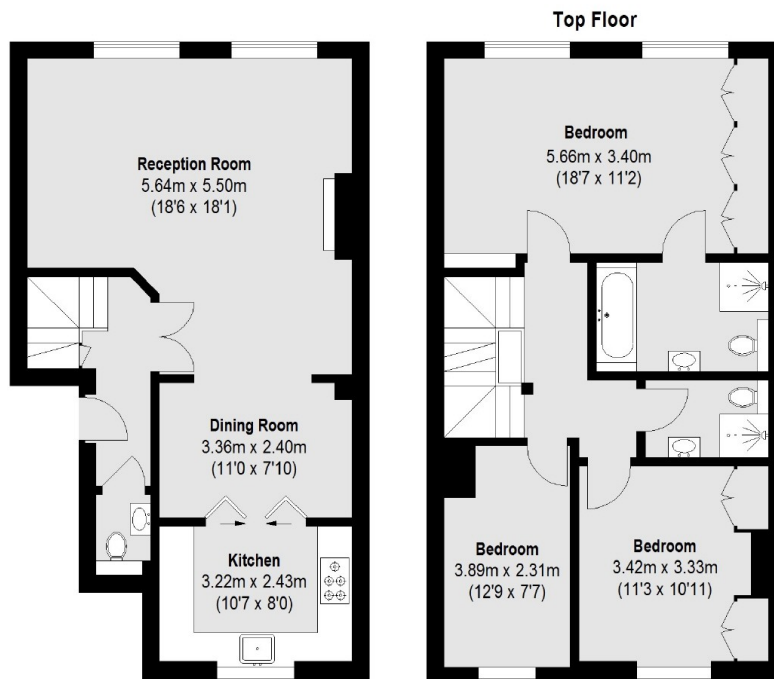
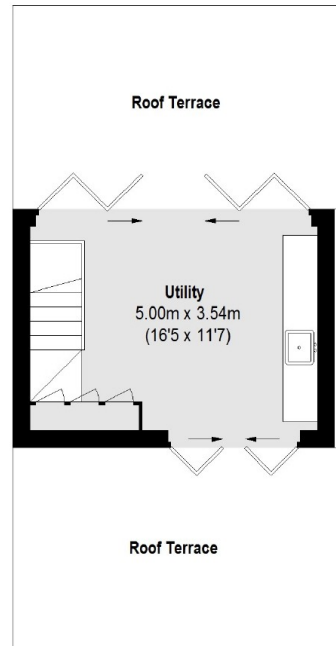
- Three Bedrooms
- Top Floor Apartment
- Two Bathrooms
- 440 Sq Ft Dual Roof Terrace
- Lift Access
- Professionally Managed







Ladbroke Gardens, London, W11



Total area (approx.): 131.12 sq. m (1411 Sq. ft)
Roof Terrace : 40.89 sq. m (440 Sq. ft)