



Kensington Gardens Square, W2

£1,794 Per week

**Dexters**



## Kensington Gardens Square, W2

A luxury two double bedroom, two bathroom lateral apartment situated on the third floor of this prestigious new development benefits from a Juliet balcony, oak wood flooring and luxury Miele appliances.

The development is conveniently located a few steps from the local shops and boutiques of Notting Hill. Bayswater Tube Station is a short walk away from the property whilst Queensway is 0.3 miles and Notting Hill Gate is 0.7 miles.

### Features

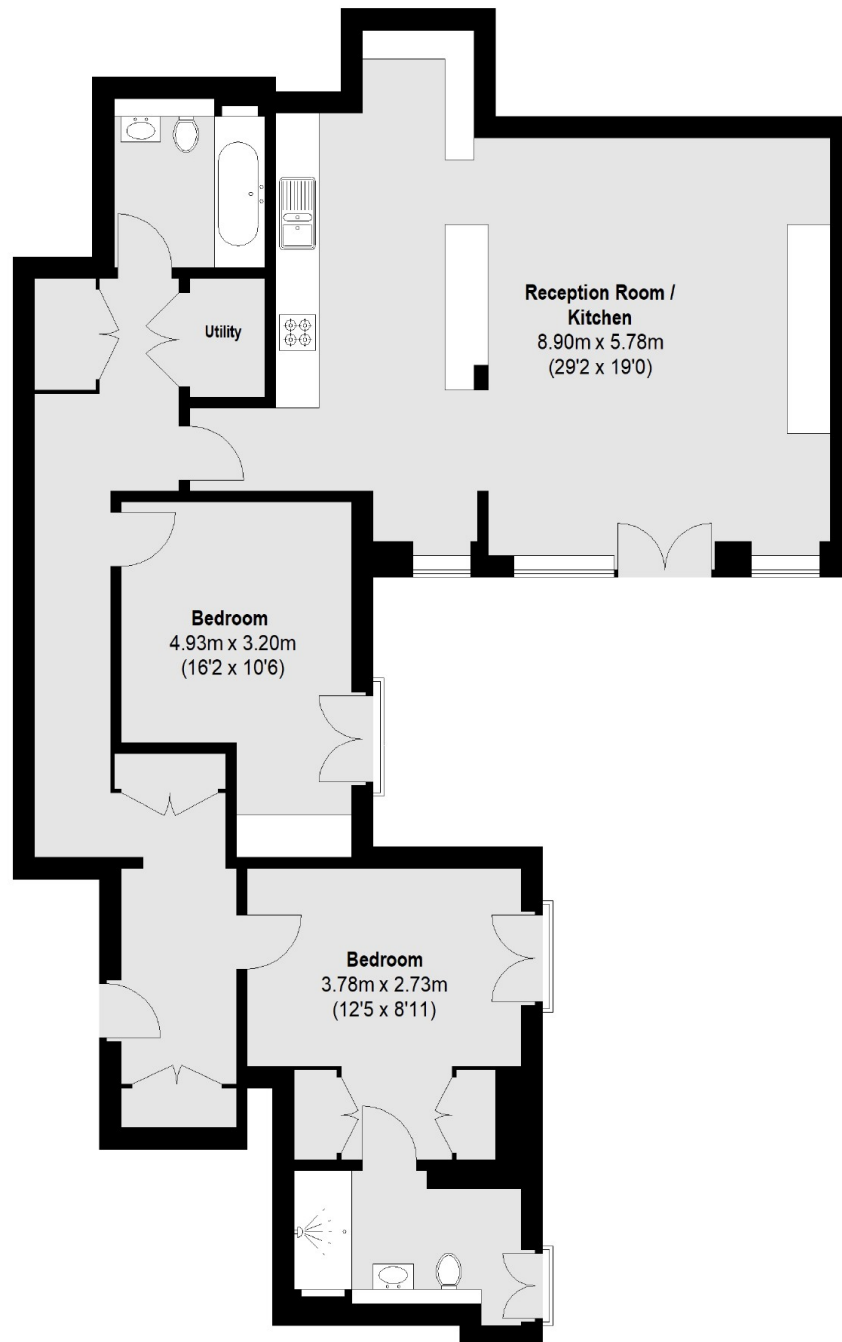
- Modern Two bedroom
- Two bathrooms
- Underground parking
- Juliet Balcony
- Oak wood flooring
- Luxury Miele appliances







# Kensington Gardens Square, London, W2



Total area (approx.): 113.21 sq. m (1218 Sq. ft)