



Lancaster Road, W11

£7,500 Per week

Dexters



Lancaster Road, W11

A immaculately presented and architecturally designed four bedroom house located on Lancaster Road ideally located within close proximity to boutique shops, restaurants and cafés of Westbourne Grove and Portobello Road.

The house benefits from a 38 foot long main reception room with double heightened floor to ceiling sliding glass doors leading to the rear garden, an eat-in kitchen and even a dumb waiter lift in addition to many more period features.

The great transportation of Westbourne Park (Circle, Hammersmith and City lines) 0.3 miles away and Notting Hill Gate (Central, Circle, and District lines) are 0.7 Miles away. Additionally, the royal green spaces of Holland Park and Kensington Gardens are a short walk.

Features

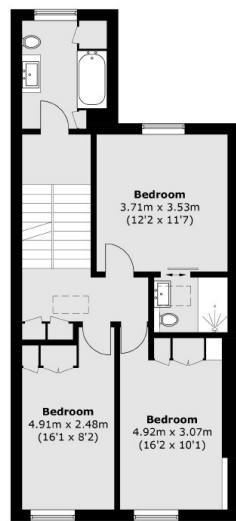
- Four Double Bedroom House
- Three Bathrooms
- Double Heightened Sliding Glass Doors
- Architecturally Designed
- Dumbwaiter Lift



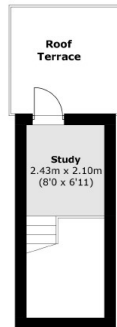




Lancaster Road, London, W11

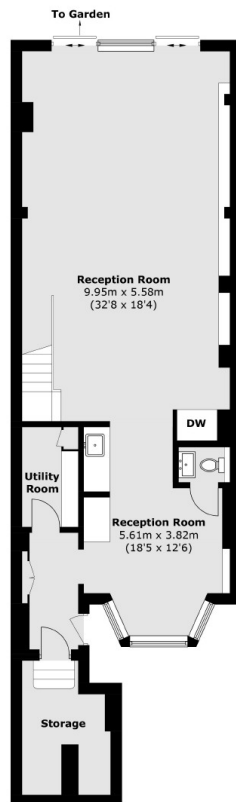


Second Floor

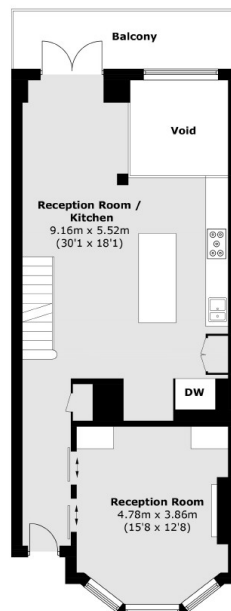


Third Floor

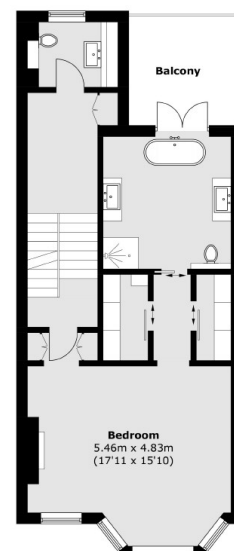
DW - Dumb Waiter



Lower Ground Floor



Ground Floor



First Floor

Total area (approx.): 296.3 sq. m (3,189.3 sq. ft)
Balcony / Roof Terrace area (approx.): 26.5 sq. m (285.2 sq. ft)
(Excluding Void)