



Warwick Square, SW1V

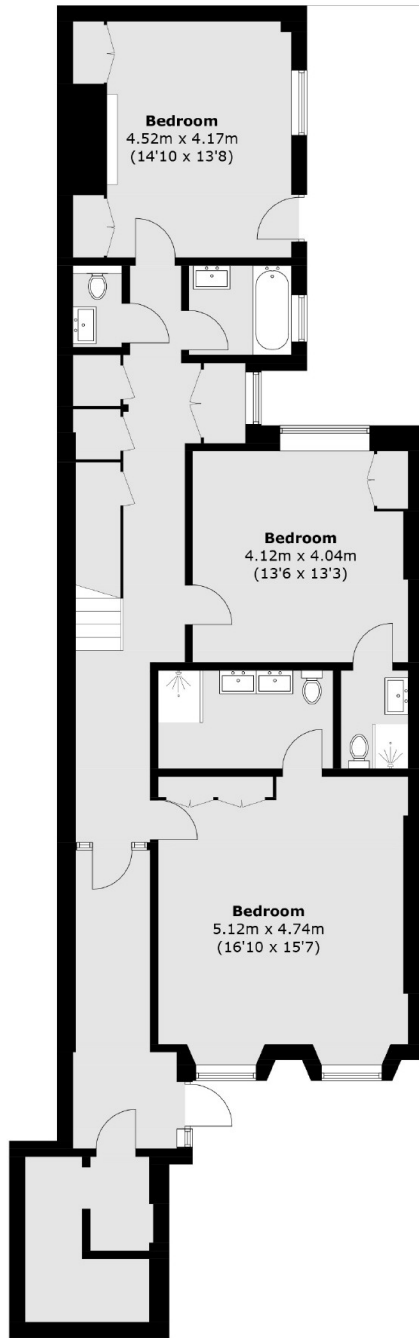
£1,730 Per week

Set within one of Pimlico's most sought-after private garden squares, this beautifully designed home offers exceptional flexibility across multiple levels. The property features three generous double bedrooms, each with its own en suite bathroom, alongside a sleek, contemporary kitchen. A stunning double reception room provides an elegant entertaining space, complemented by a second versatile area ideal for a study, media room, or additional lounge. Further benefits include excellent storage throughout and exclusive access to immaculately maintained communal gardens, a residents' tennis court, and a children's play area.

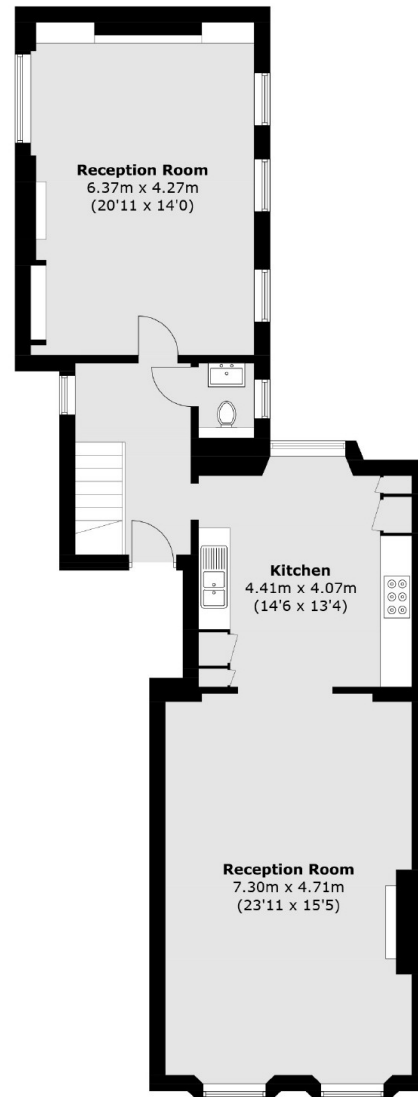
Features

- Access to Residents Square
- Spilt Level
- Three En Suite Bedrooms
- Double impressive reception
- Plenty of storage throughout
- Residents tennis court

Warwick Square, London, SW1V



Lower Ground Floor



Ground Floor

Total area (approx.): 210.0 sq. m (2,260.5 sq. ft)