



## Westmoreland Terrace, SW1V

£1,100 Per week

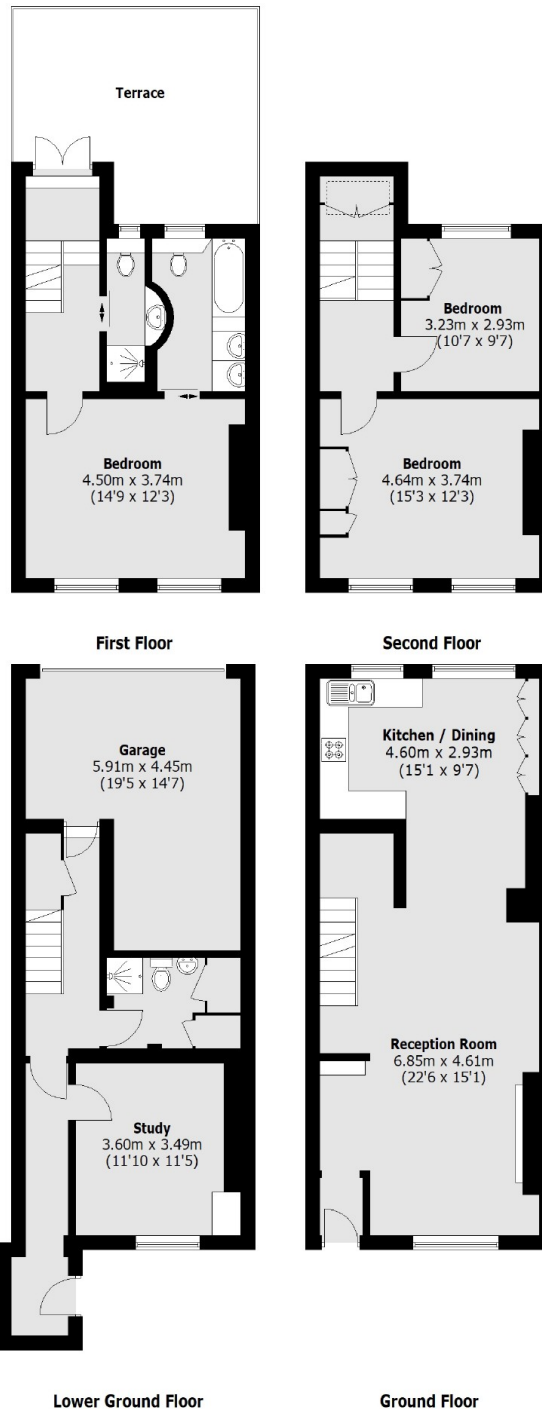
A lovely and spacious four bedroom house to rent split over four floors and ideally located in the Pimlico Grid.

Westmoreland Terrace is located just off Pimlico Road and close to many shops and restaurants including The Orange and Aylesford organic restaurant and Starbucks coffee shop. It is also close to the amenities on Warwick road including Waitrose.

### Features

- Four Bedrooms
- Kitchen Diner
- Two Bathrooms
- Private Roof Terrace
- Whole House
- Large Garage

# Westmoreland Terrace, London, SW1V



Total area (approx.): 178.8 sq. m (1924.5 Sq. ft)  
(Including Garage)  
Terrace : 20.2 sq. m (217.4 Sq. ft)