



Greycoat Street, SW1P

£923 Per week

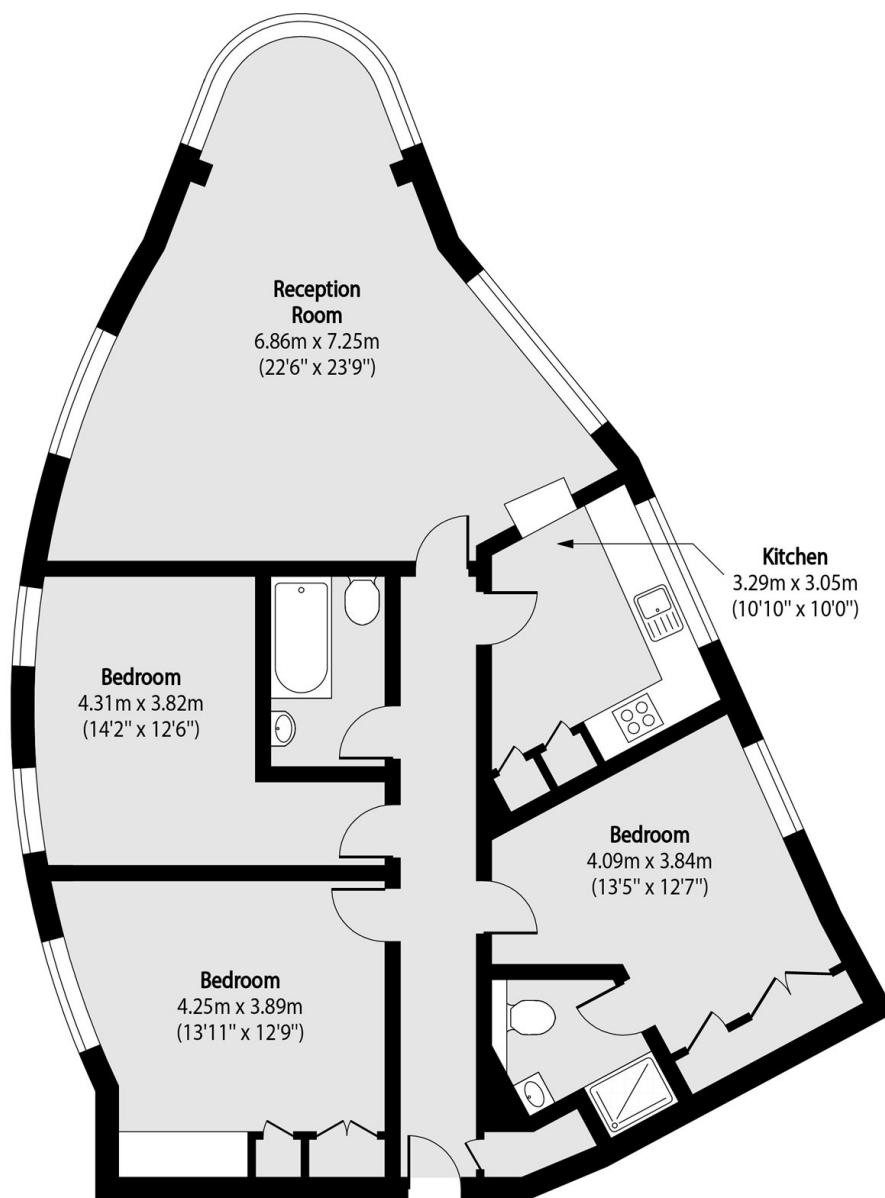
A spacious well presented (third floor with lift) three bedroom apartment with underground parking space situated in a prestigious apartment building.

Greycoat Street is ideally located close to the excellent amenities of both Victoria and Pimlico.

Features

- Three bedrooms
- Two Bathrooms
- Large Living Space
- Parking Space
- Secure Building
- Wooden Floors

Greycoat Street, London, SW1P



Total area (approx): 104.14 sq m (1121 sq. ft)