



Roland Gardens, SW7

£1,380 Per week

This three double bedroom flat is arranged over the fourth & fifth floors of a red brick purpose built building in South Kensington. The property has recently been furnished and is just off Old Brompton Road and close to Gloucester road.

Close to Gloucester Road with a wide choice of shops and restaurants that include a Waitrose supermarket, Boots the chemist, Pauls the bakers and Starbucks coffee shop. The nearest underground is Gloucester Road.

Features

- Three Double Bedrooms
- Two Bathrooms
- Duplex 4th/5th Floor With Lift
- Allocated Off Street Parking
- Wooden Flooring Throughout
- Private Balcony



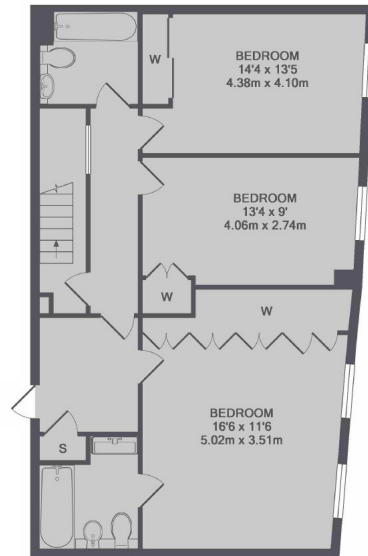
Roland Gardens, London, SW7

The first floor of this duplex comprises large reception room with ample space for dining and access to a balcony, modern, well equipped kitchen and guest wc. The second floor houses master bedroom with en suite, two further double bedrooms and additional bathroom. The property benefits from wood flooring throughout and allocated underground parking.

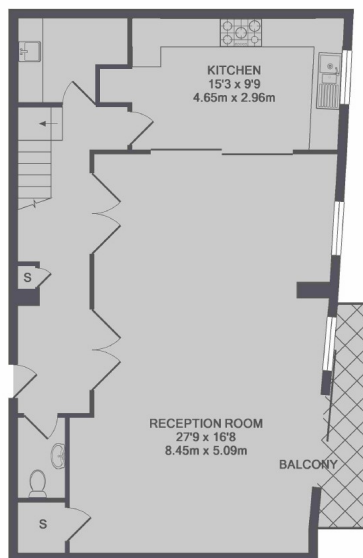




Roland Gardens, London, SW7



1ST FLOOR



GROUND FLOOR

TOTAL APPROX. FLOOR AREA 1667 SQ.FT. (154.8 SQ.M.)

Contact

To arrange a viewing call our office on the number below or visit our website.



Energy Rating: . We aim to make our particulars both accurate and reliable. However they are not guaranteed; nor do they form part of an offer or contract. If you require clarification on any points then please contact us, especially if you're traveling some distance to view. Please note that appliances and heating systems have not been tested and therefore no warranties can be given as to their good working order.