



South Kensington, SW7

£3,750 Per week

Dexters



Prince Consort Road, London, SW7

The penthouse is one of the best portered buildings in South Kensington. The property is perfect for a professional tenant looking to be in the heart of the action.

The property has a large master bedroom with a beautiful ensuite bathroom. The bedroom has plenty of built in storage and has lovely views over the Albert Hall and South Kensington. The second and third bedrooms again are really good size all with built in storage and access to their own ensuite bathrooms.

The living room is fully open with a newly refurbished modern day kitchen with all the relevant appliances. The dining room has a large arched window which over looks West London and the Albert hall with one of the best views around. The property has a separate office space which is large enough to be used as a fourth bedroom. The property has a large private decked terrace which has a working fire pit and is perfect for entertaining friends and family.

Albert Hall Mansions is a prestigious development located directly opposite Hyde Park and within close proximity of the world class amenities of Knightsbridge.

Features

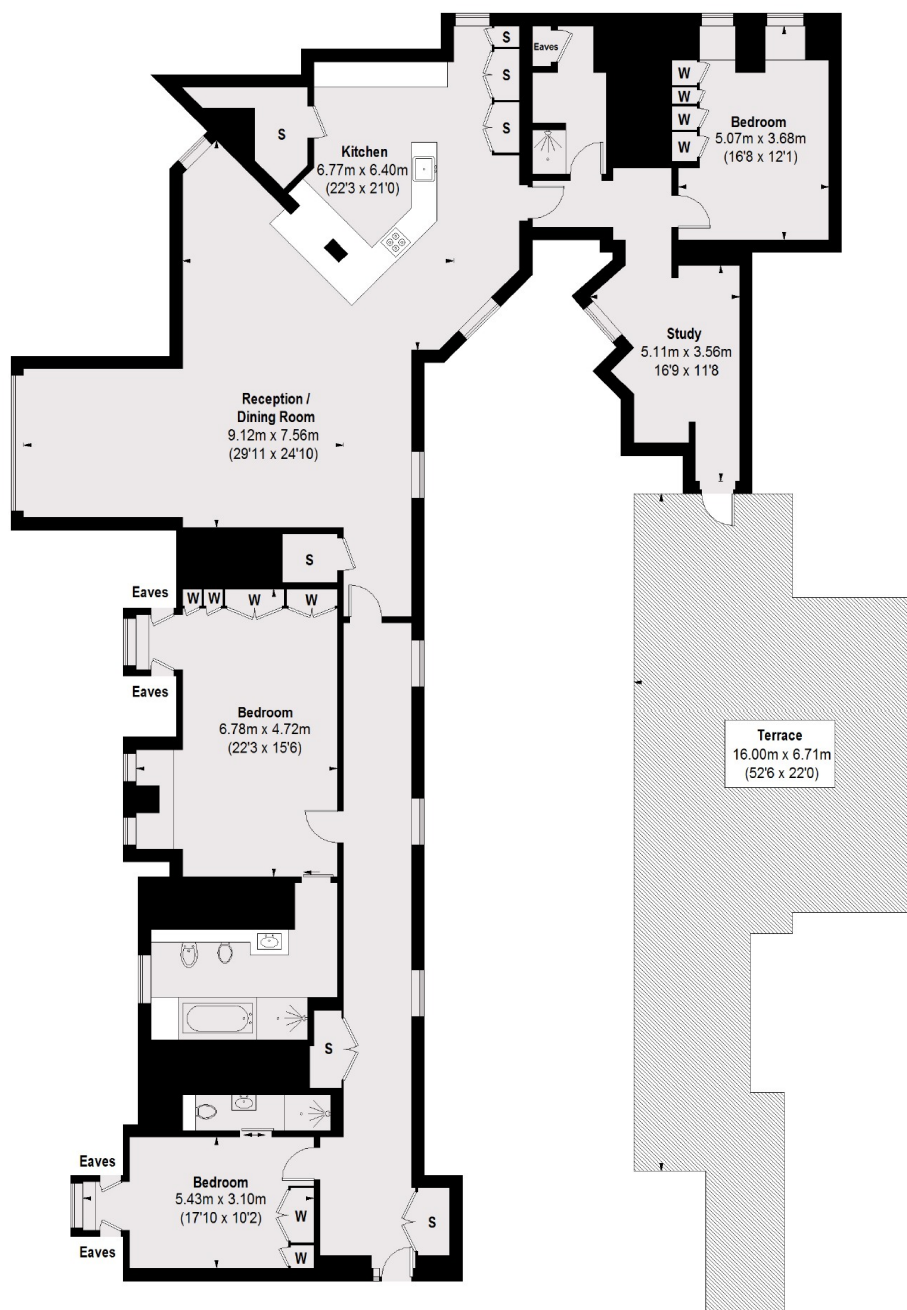
- Three Double Bedrooms
- Three Bathrooms
- Seperate Office
- Private Terrace
- Concierge







Prince Consort Road, London, SW7



TOTAL APPROX. FLOOR AREA (EXCLUDING EAVES) 2668 SQ. FT. (247.89 SQ. M.)
TERRACE = 910 SQ. FT. (84.52 SQ. M.)

Dexters

South Kensington
146 Old Brompton Road, South
Kensington, London, SW7 4NR
Lettings
020 7244 7711

Energy Rating: C. We aim to make our particulars both accurate and reliable. However they are not guaranteed; nor do they form part of an offer or contract. If you require clarification on any points then please contact us, especially if you're traveling some distance to view. Please note that appliances and heating systems have not been tested and therefore no warranties can be given as to their good working order.

RICS Regulated
Estate Agent
and Letting Agent

dexters.co.uk