



Ennismore Gardens, SW7

£6,250 Per week

Dexters



Ennismore Gardens, London, SW7

This prestigious property features a generous drawing room with high ceilings, six double bedrooms and six bathrooms with a personal lift and access to the communal gardens.

The whole house has under-gone refurbishment from top to bottom and includes parquet wooden flooring and keeping the original cornicing and fireplaces as features and a private lift to each floor.

The ground floor consists of two reception rooms, possibly a library and a snug. On the first floor is the impressive drawing room with a balcony on each side of the room.

The master suite takes up the entire floor with in-built bespoke storage and a particularly impressive en-suite. The third and fourth floors include four more bedrooms three bathrooms and a further terrace.

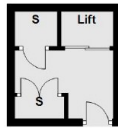
Located to the north of the Brompton Road and just to the south of Hyde Park, the property is a short walk from the many amenities of the Knightsbridge area.

Features

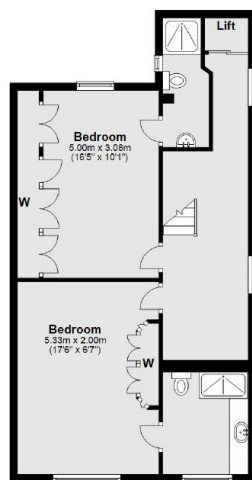
- Six Bedrooms
- Six Bathrooms
- Personal Lift
- Access to Communal Gardens
- Parquet Wood Floors
- Marble Features



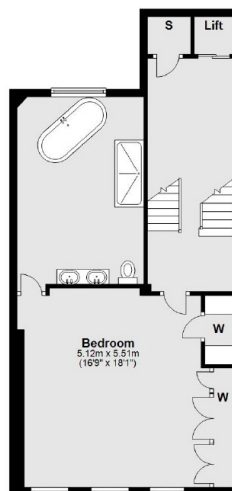
Ennismore Gardens, London, SW7



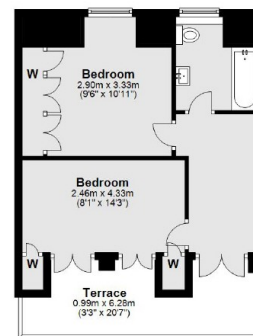
Lower Second Floor



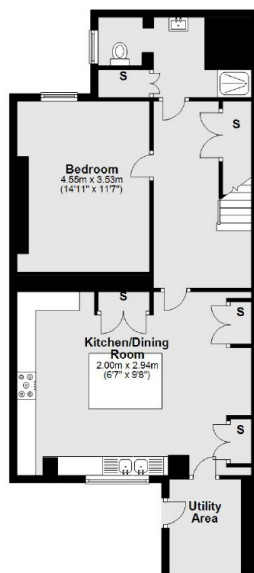
Third Floor



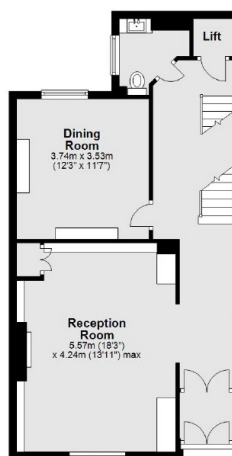
Second Floor



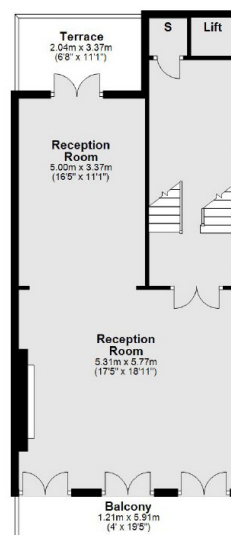
Fifth Floor



Lowest Ground Floor



Ground Floor



First Floor

Total area: approx. 379.4 sq. metres (4084.0 sq. feet)

Dexters

South Kensington
146 Old Brompton Road,
South Kensington, London,
Lettings
020 7244 7711

Energy Rating: F. We aim to make our particulars both accurate and reliable. However they are not guaranteed; nor do they form part of an offer or contract. If you require clarification on any points then please contact us, especially if you're traveling some distance to view. Please note that appliances and heating systems have not been tested and therefore no warranties can be given as to their good working order.

RICS Regulated
Estate Agent
and Letting Agent

dexters.co.uk