

## Palace Gate, W8

£1,650 Per week

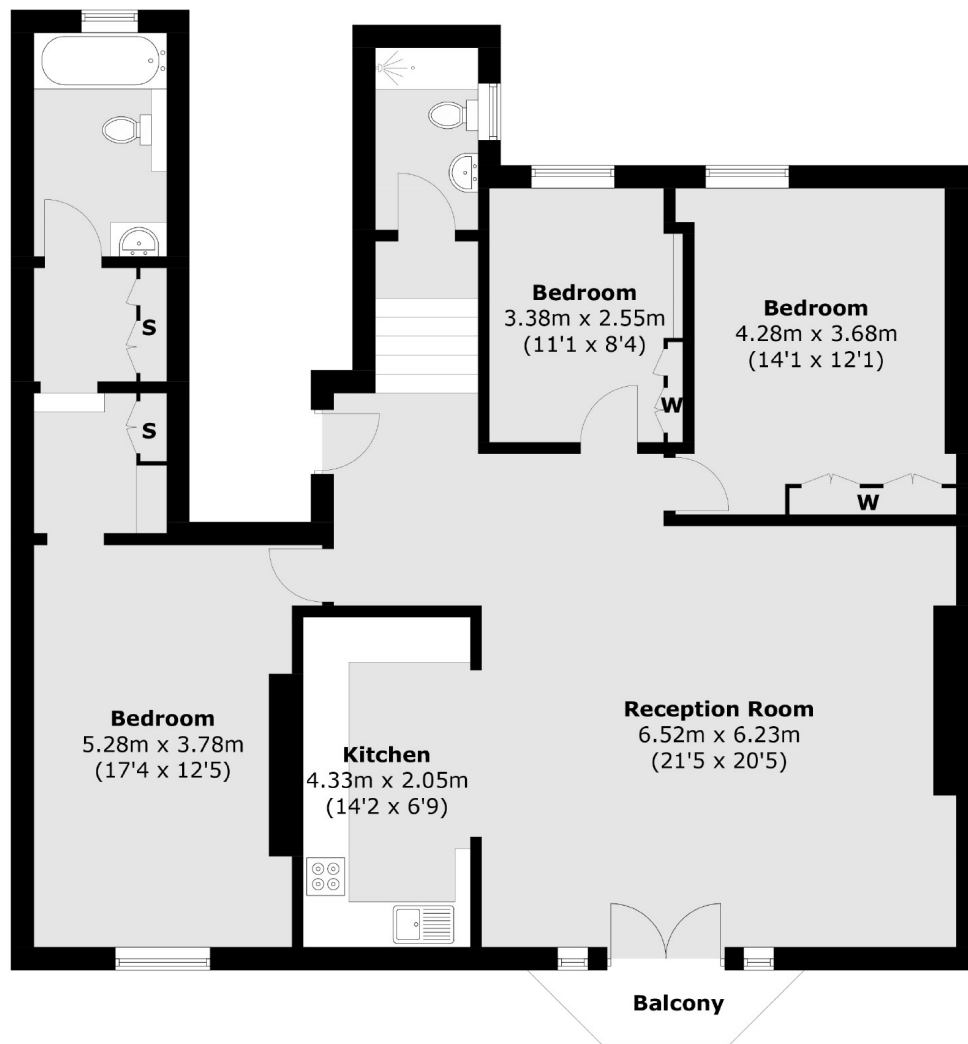
A beautiful three bedroom flat to rent on the third floor of a period building with a lift. The property has wood floors and a private balcony and bespoke marble bathrooms.

Located next to Hyde Park, with easy access to restaurants on Gloucester Road including Pret coffee shop, Pauls bakery and Waitrose supermarket. The closest underground station is Gloucester Road.

### Features

- Three Bedrooms
- Lift In The Building
- Private Balcony
- Beautifully Finished
- Two Bathrooms
- Interior Designed

## Palace Gate, London, W8



Total area (approx.): 116.1 sq. m (1,249.7 sq. ft)  
Balcony Area: 2.6 sq. m (27.9 sq. ft)

### Contact

To arrange a viewing call our office on the number below or visit our website.



Energy Rating: D. We aim to make our particulars both accurate and reliable. However they are not guaranteed; nor do they form part of an offer or contract. If you require clarification on any points then please contact us, especially if you're traveling some distance to view. Please note that appliances and heating systems have not been tested and therefore no warranties can be given as to their good working order.