



Walton Street, SW3

£3,500 Per week

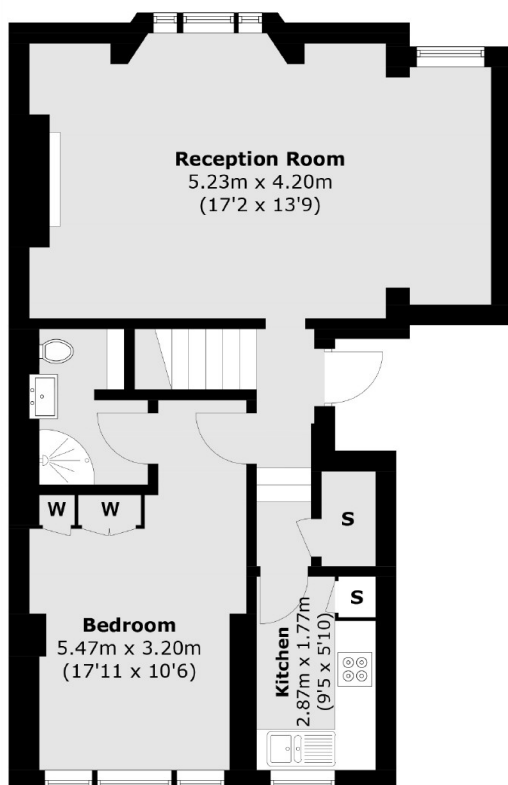
An immaculate split level raised ground floor and first floor maisonette, consisting of three double bedrooms, two bathrooms and a large reception space for living and dining. The property also benefits from having two private terraces.

Walton Street is ideally located between Knightsbridge, Sloane Square and South Kensington stations. Beauchamp Place is near by with all the boutique shops and local amenities on offer.

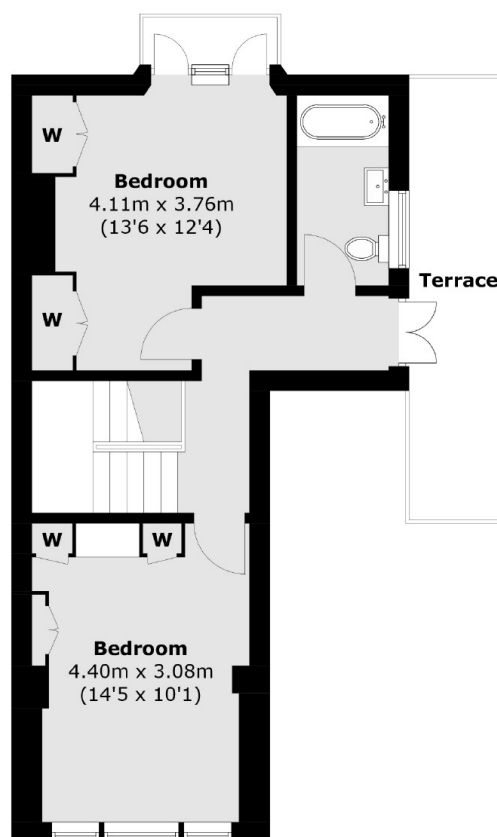
Features

- Split Level Maisonette
- Immaculate Condition
- Three Double Bedrooms
- Two Bathrooms
- Two Private Terraces
- Excellent Location

Walton Street, London, SW3



Lower Ground Floor



First Floor

Total area (approx.): 102 sq. m (1,097.9 sq. ft)
Terrace area : 10.1 sq. m (108.7 sq. ft)