



Emperors Gate, SW7

£2,900,000

An impressive split level four bedroom flat located within a quiet cul-de-sac in South Kensington.

Emperors Gate is a quiet and private residence located with amazing transport links near Cromwell Road leading to A4/M4, as well as being in close proximity to Gloucester Road, South Kensington and Kensington High Street stations.

Features

Share Of The Freehold
Four Bedrooms
Two Bathrooms
Split Level Flat
Private Front Entrance
High Ceilings



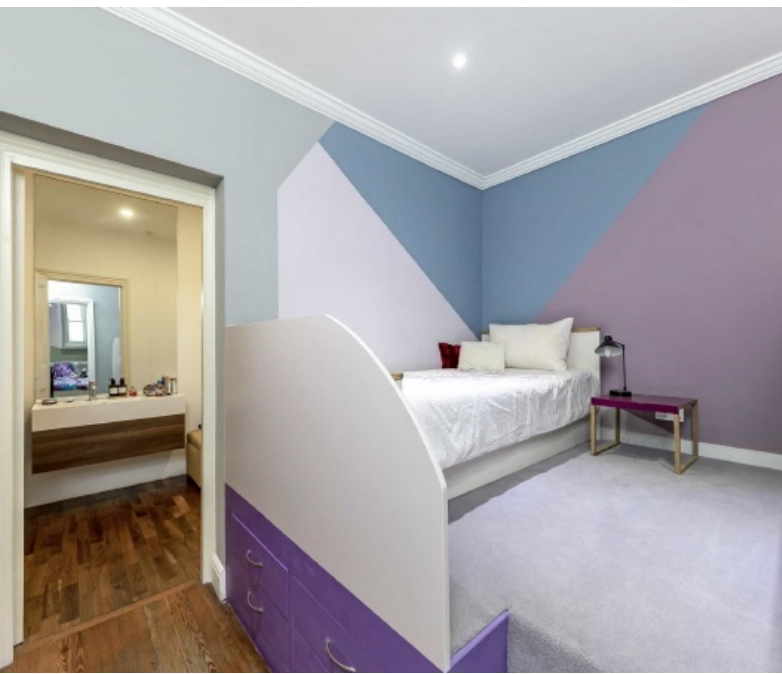
Emperors Gate, London, SW7

The apartment is presented in excellent condition throughout benefitting from having a unique private front door entrance.

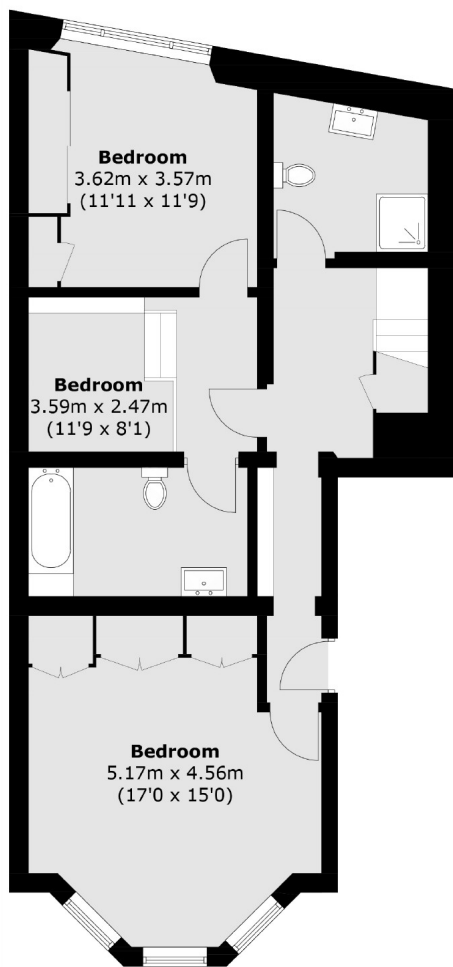
The raised ground floor consist of grand high ceilings with restored original cornicing in the welcoming entrance hallway and double reception room with open plan kitchen. There is a further bedroom on this floor next to the stairs leading down to the floor below.

The lower ground floor level consists of the principle bedroom and two further bedrooms with use of an en-suite and further modern bathroom. The bedrooms on the this level could be rearranged allowing the new owner to choose the principle bedroom should they want an en-suite.

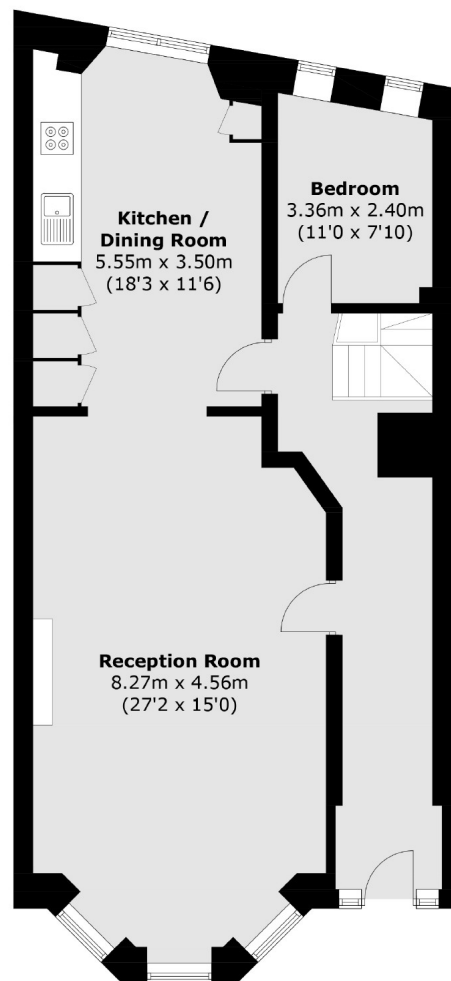




Emperors Gate, London, SW7



Lower Ground Floor



Raised Ground Floor

Total area (approx.): 149.2 sq. m (1605.9 sq. ft)

Contact

To arrange a viewing call our office on the number below or visit our website.



Energy Rating: TBC. We aim to make our particulars both accurate and reliable. However they are not guaranteed; nor do they form part of an offer or contract. If you require clarification on any points then please contact us, especially if you're traveling some distance to view. Please note that appliances and heating systems have not been tested and therefore no warranties can be given as to their good working order.