



Beaufort Gardens, SW3

£1,614 Per week

This sophisticated and comfortable split-level duplex features two bedrooms and two shower rooms. It is positioned at the rear of the building, offering views of the charming cottages behind.

This stucco-fronted, west-facing period residential building is located on the eastern side of Beaufort Gardens. It is just moments away from the exclusive and diverse amenities of Brompton Road, which offers world-renowned boutiques, restaurants, and the iconic Harrods.

This area boasts a selection of exceptional restaurants, including Scalini on Walton Street, Zafferano on Lowndes Street, San Lorenzo on Beauchamp Place, and Amaya on Motcomb Street.

Features

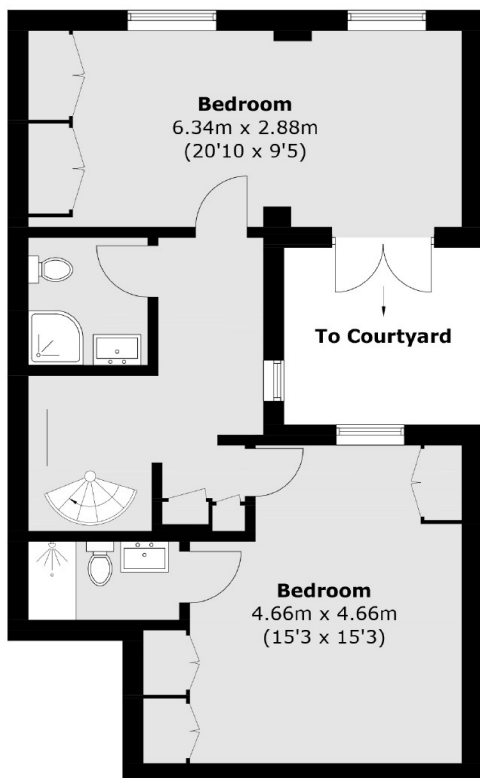
- Two Bedroom
- Two Bathroom
- Air Conditioned
- Brand New Refurb
- Lift
- Porter



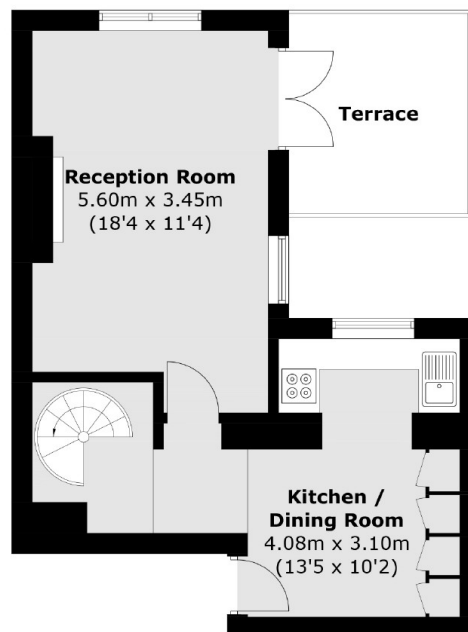
Beaufort Gardens, SW3



Beaufort Gardens, London, SW3



Lower Ground Floor



Ground Floor

Total area (approx.): 93.0 sq. m (1001.0 sq. ft)
Terrace: 7.7 sq. m (82.9 sq. ft)