

SOUTH BANK TOWER
SOUTH BANK



A spacious two bedroom apartment situated on the twentieth floor of one of London's most prestigious landmark developments offering unrivalled views of the City skyline.

The property has been furnished to a high standard and features floor to ceiling windows and hardwood flooring. There is a high-quality kitchen with island work surface and a reception room.

The bedrooms are unusually large with the master leading to a private viewing/relaxation room and en suite bathroom. There is also a luxury family bathroom.



The development offers five-star amenities including 24-hour porter/concierge, swimming pool, gym, sauna, resident's business lounge and screening room. There is also a roof terrace providing spectacular views of St Pauls and beyond.

Located within London's South bank and close to the world-class theatres, art centres and galleries. The National Theatre, the Old Vic and Young Vic, Shakespeare's Globe Theatre and the Royal Festival Hall are all close by.

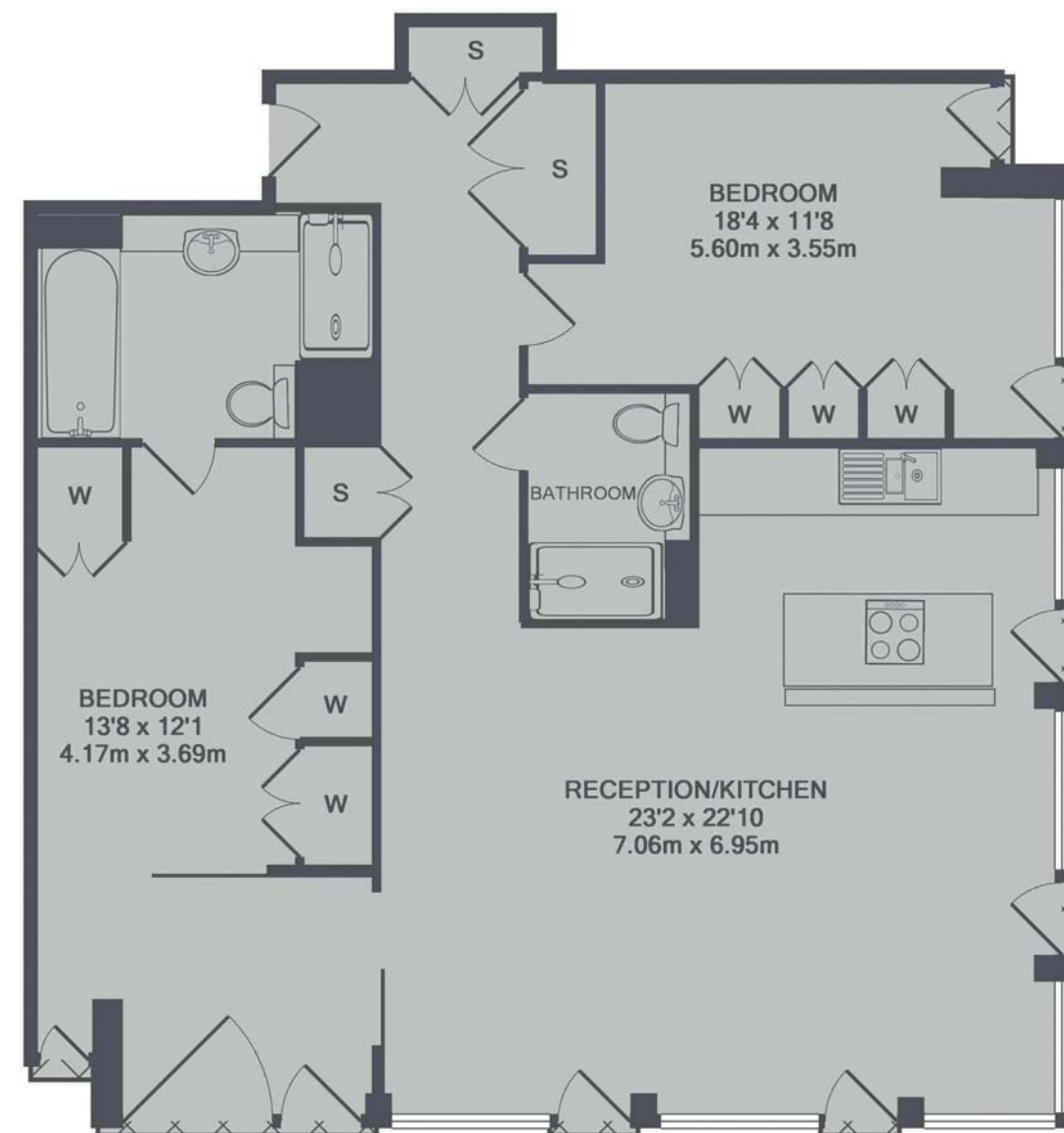


- Twentieth Floor
- Spectacular Views
- High Specification
- On-Site Concierge Service
- Residents Gym and Pool
- Roof Terrace





South Bank Tower, South Bank
London, SE1



Dexters London Bridge
54 Borough High Street,
London, SE1 1XL
Lettings
020 7650 5101

TOTAL APPROX. FLOOR AREA 1,217 SQ. FT (113.1 SQ. M)

Energy Rating: B. We aim to make our particulars both accurate and reliable. However they are not guaranteed; nor do they form part of an offer or contract. If you require clarification on any points then please contact us, especially if you're traveling some distance to view. Please note that appliances and heating systems have not been tested and therefore no warranties can be given as to their good working order.



Price on application

Dexters

London Bridge
020 7650 5101

dexters.co.uk