



Long Lane, SE1

£750 Per week

Exceptionally well maintained two bedroom, two bathroom property. One of only two flats on the top (fourth) floor the property is well over 1000 sq ft and has an amazing south facing 48' terrace and a secure allocated parking space.

Ideally located for Bermondsey street and within half a mile miles of Borough and London Bridge stations.

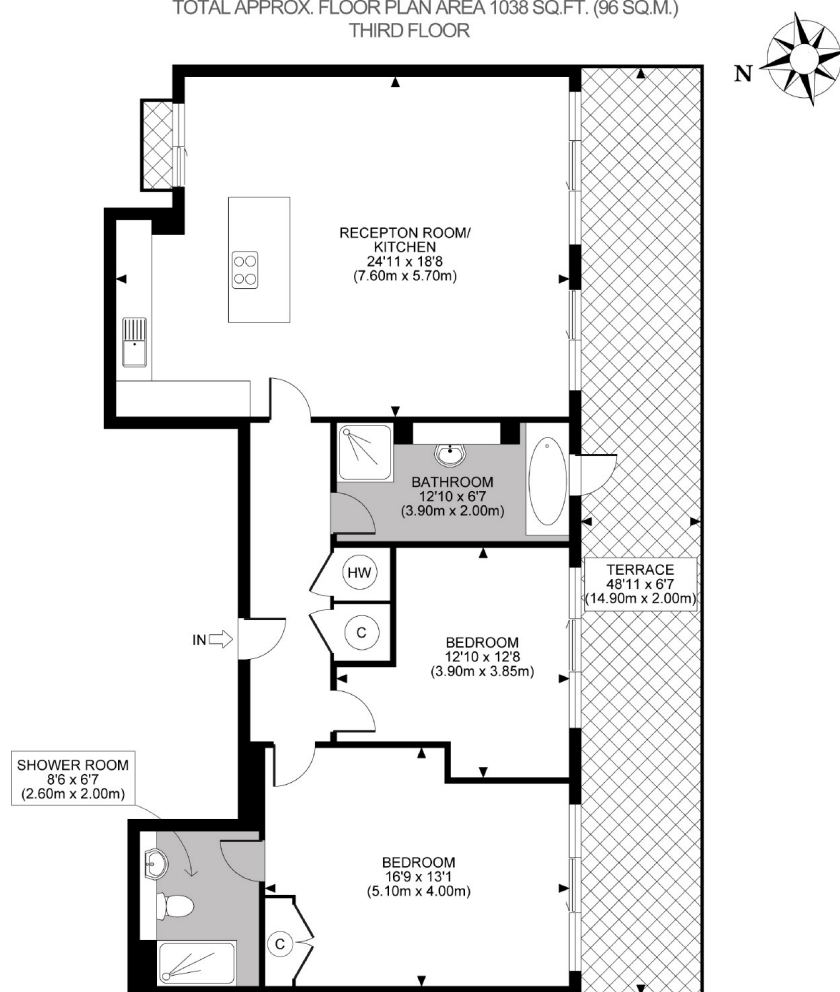
Features

- Two bedroom penthouse
- Two bathroom
- 48' private terrace
- Secure allocated parking
- Wood flooring
- Lift

Long Lane, London, SE1

FIELD & SONS
Surveyors, Valuers & Estate Agents
EST. 1804

LONG LANE, PRINTWORKS, SE1
TOTAL APPROX. FLOOR PLAN AREA 1038 SQ.FT. (96 SQ.M.)
THIRD FLOOR



All measurements walls, doors, windows, fittings and their appliances, their size and locations are shown conventionally and are approximate only and cannot be regarded as being a representation either by the seller or his agent nor zentuvo
www.zentuvo.co.uk

Contact

To arrange a viewing call our office on the number below or visit our website.



Regulated
Estate Agent
and Letting Agent

Energy Rating: . We aim to make our particulars both accurate and reliable. However they are not guaranteed; nor do they form part of an offer or contract. If you require clarification on any points then please contact us, especially if you're traveling some distance to view. Please note that appliances and heating systems have not been tested and therefore no warranties can be given as to their good working order.