



Crown Square, SE1

£3,400,000

Dexters



Crown Square, London, SE1

This two double bedroom flat in the One Tower Bridge development is in perfect condition. A large open plan kitchen living space and large terrace with stunning river, City and Tower Bridge views.

Located on the fourth floor of Blenheim House, the flat is beautifully designed with a fully fitted kitchen with top of the range built appliances, fully tiled bathrooms and incredible views over London.

The riverside development offers 24 hour concierge, state of the art gym, swimming pool and spa facilities and beautiful communal areas.

Surrounded by excellent restaurants cafés and delis, the development is overlooking Tower Bridge, The Tower of London, The Shard and The City skyline.

Located only 0.2 miles from London Bridge station, Blenheim House offers excellent transport links to anywhere across London.

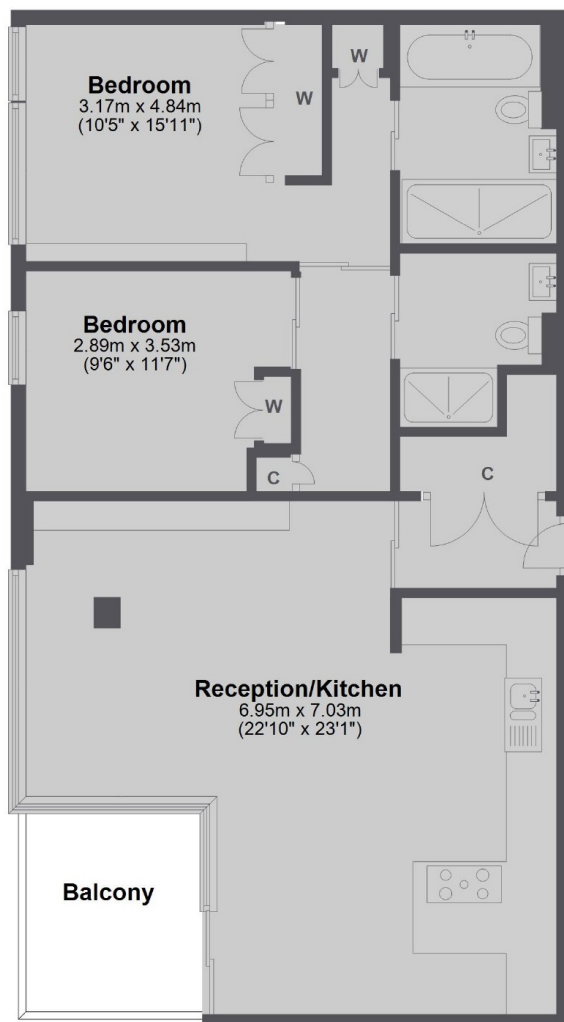
Features

- Two Double Bedrooms
- Two Bathrooms
- Fantastic Condition
- Incredible Views of London
- Gym, Spa and Pool Facilities
- 24 Hour Concierge



Crown Square, London, SE1

Fourth Floor



Total area: approx. 87.5 sq. metres (941.3 sq. feet)