



Waterloo, SE1

£2,650 Per week

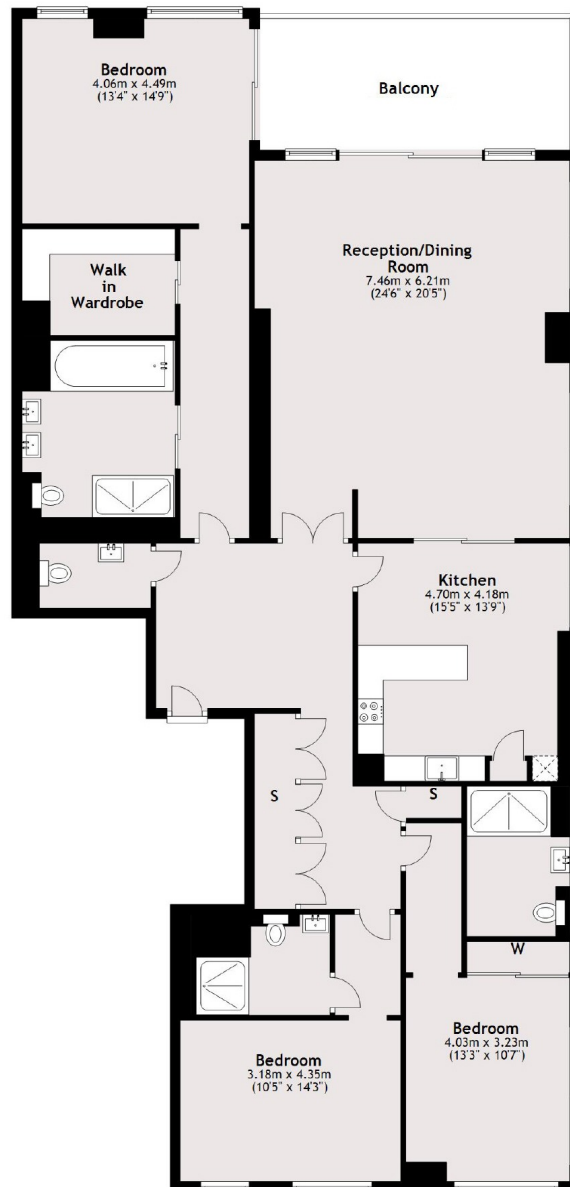
Amazing three bedroom apartment on the 19th floor of this exclusive riverside development, featuring a large private balcony with spectacular view of the river, the London Eye and the Houses of Parliament.

Amazing riverside location on London's South Bank overlooking the London Eye and close to many of London's premier tourist attractions. The South bank also offers a wide variety of bars and restaurants.

Features

- 19th Floor
- Large Private Balcony
- Spectacular Views
- On-site Gym and Pool
- New Development
- Luxury City Living

Belvedere Road, London, SE1



19th Floor

Total area: approx. 190.0 sq. metres (2045.7 sq. feet)

Contact

To arrange a viewing call our office on the number below or visit our website.



Energy Rating: . We aim to make our particulars both accurate and reliable. However they are not guaranteed; nor do they form part of an offer or contract. If you require clarification on any points then please contact us, especially if you're traveling some distance to view. Please note that appliances and heating systems have not been tested and therefore no warranties can be given as to their good working order.