



Upper Ground, SE1

£4,300 Per week

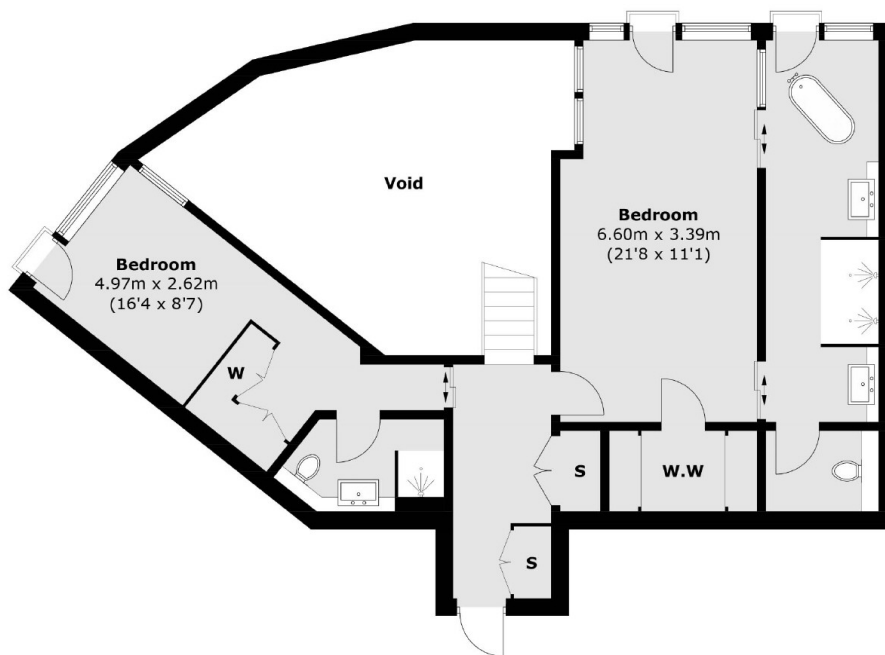
Breathtaking apartment situated on the 34th floor and within the exclusive 'Black Edition' element of South Bank Tower. Extending to 1950 sq ft the apartment features double height floor to ceiling windows offering uninterrupted views of the Thames and London skyline.

Fantastic location in the heart of London's South Bank just off the Thames and within half a mile of Blackfriars, Waterloo and London Bridge Stations. Close by you will find world class theatres, art centres and galleries.

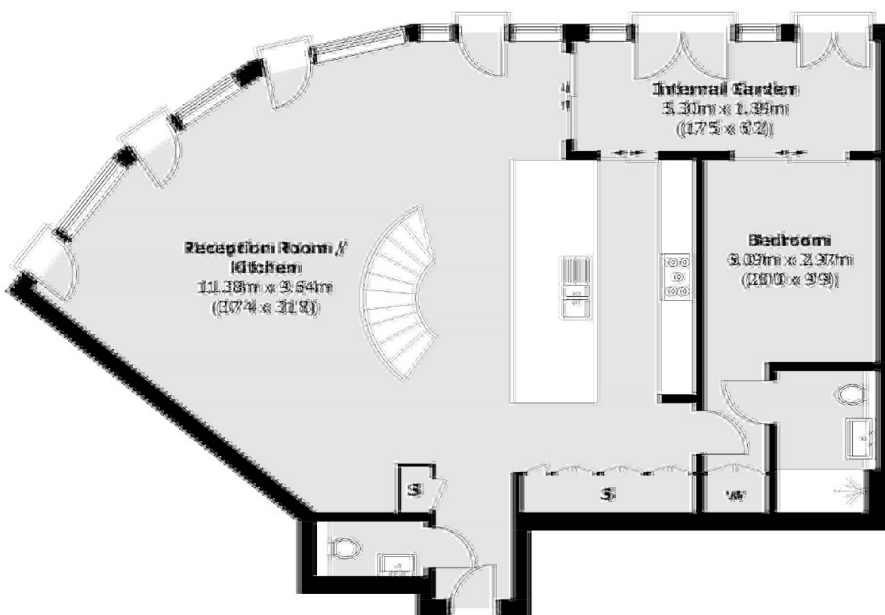
Features

- 34th Floor
- Split Level
- Floor to Ceiling Windows
- On-site Gym, Pool and Cinema
- Secure Parking
- 24 hr Concierge

Upper Ground, London, SE1



Thirty Fifth Floor



Thirty Fourth Floor

**Total area (approx.): 179.1 sq. m (1,927.8 sq. ft)
(Including Internal Garden & Excluding Void)**

Dexters

London Bridge
54 Borough High Street
London
SE1 1XL
Lettings
0207 650 5101

Energy Rating: . We aim to make our particulars both accurate and reliable. However they are not guaranteed; nor do they form part of an offer or contract. If you require clarification on any points then please contact us, especially if you're traveling some distance to view. Please note that appliances and heating systems have not been tested and therefore no warranties can be given as to their good working order.

RICS | Regulated
Estate Agent
and Letting Agent

dexters.co.uk