



Blackfriars Road, SE1

£950,000

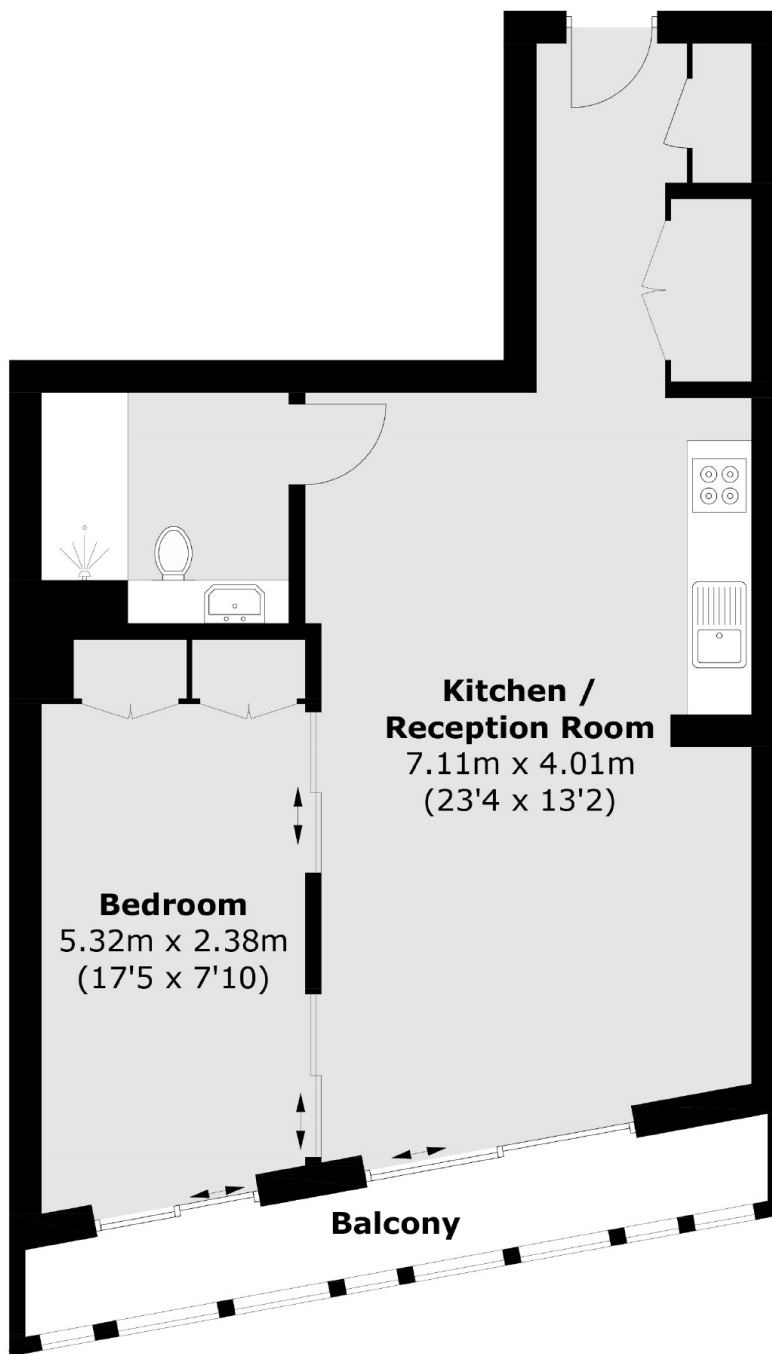
A stunning 14th floor apartment in the iconic One Blackfriars. The property is an excellent example of open-plan living and features marble flooring, state of the art kitchen and bathroom, winter gardens and river views.

The apartment is ideal for those requiring a quick and easy commute to the City and is situated close to many of London's premier attractions including the Tate Modern, the Globe Theatre and the London Eye

Features

- 14th Floor
- River Views
- Leisure Facilities
- 24 Hour Concierge
- Winter Garden
- Open Plan Living

Blackfriars Road, London, SE1



Fourteenth Floor

Total area (approx.): 53.7 sq. m (578.0 sq. ft)
Balcony (approx.): 5.7 sq. m (61.3 sq. ft)

Dexters

London Bridge
54 Borough High Street
London
SE1 1XL
Sales
0207 650 5100

Energy Rating: B. We aim to make our particulars both accurate and reliable. However they are not guaranteed; nor do they form part of an offer or contract. If you require clarification on any points then please contact us, especially if you're traveling some distance to view. Please note that appliances and heating systems have not been tested and therefore no warranties can be given as to their good working order.

 **RICS** | Regulated
Estate Agent
and Letting Agent

dexters.co.uk