



Winchester Square, SE1

£475,000

A stylish and modern apartment of almost 700 sq ft, set within Winchester Square near Borough Market. The property features a spacious open-plan kitchen and living area, a generous double bedroom, a contemporary three-piece bathroom, a separate utility room, and ample storage throughout. Offers in excess of £500,000.

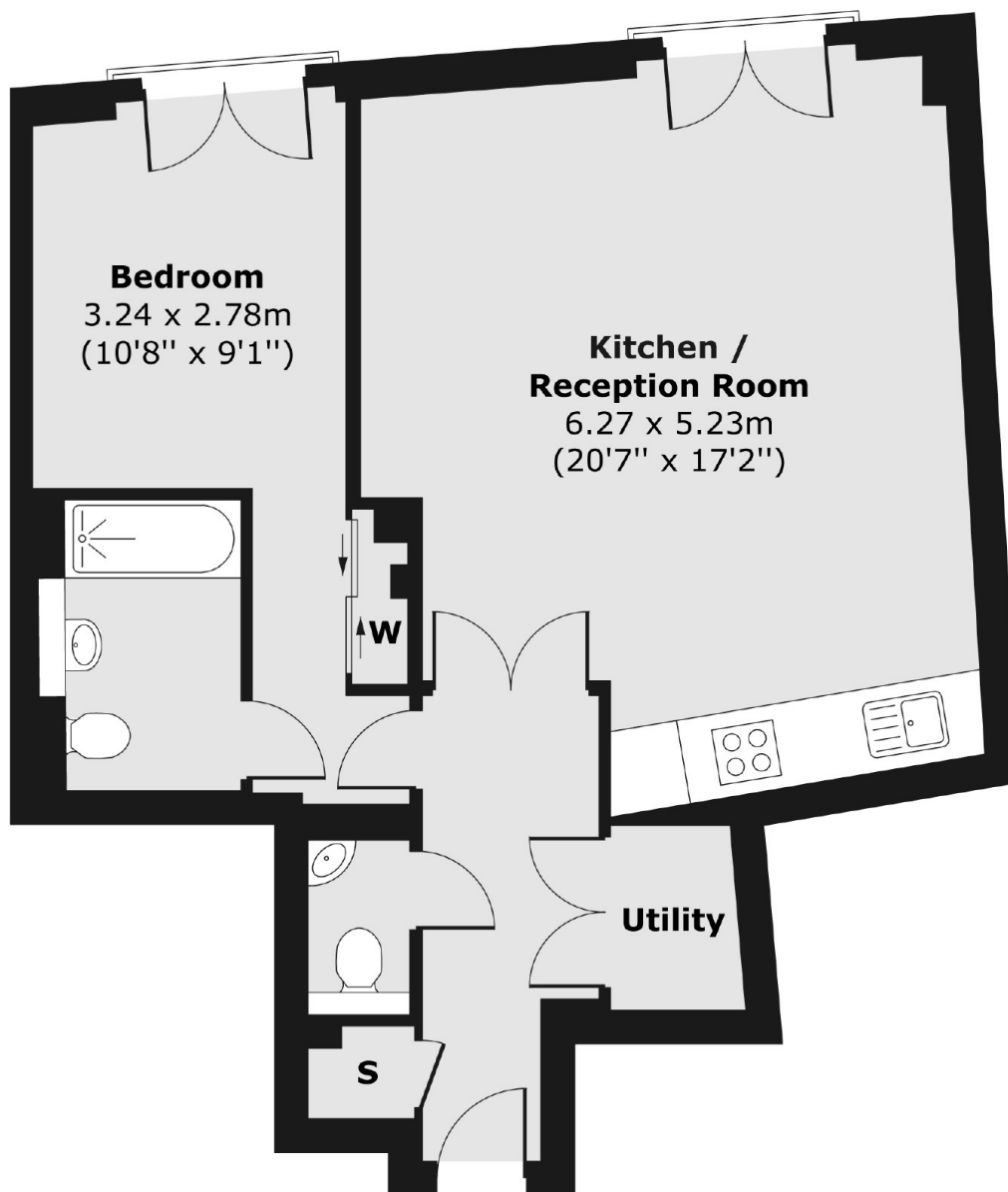
Winchester Square enjoys an outstanding location, tucked just behind the bustling stalls of Borough Market. London Bridge Station, Bankside, and The Shard are all just moments away, while the surrounding area offers an endless choice of artisan cafés, acclaimed restaurants, boutique shops, and cultural landmarks, making it a truly dynamic place to call home.

Features

- Offers in excess of £500,000
- Heart of Borough Market
- Highly Desirable Location
- Separate Utility Room
- Almost 700 ft²
- Lift Access & Secure Entry

Winchester Square, London, SE1

First Floor



Total area (approx.) 62.25 sq. m (670 sq. ft)