



Longfield Estate, SE1

£350,000

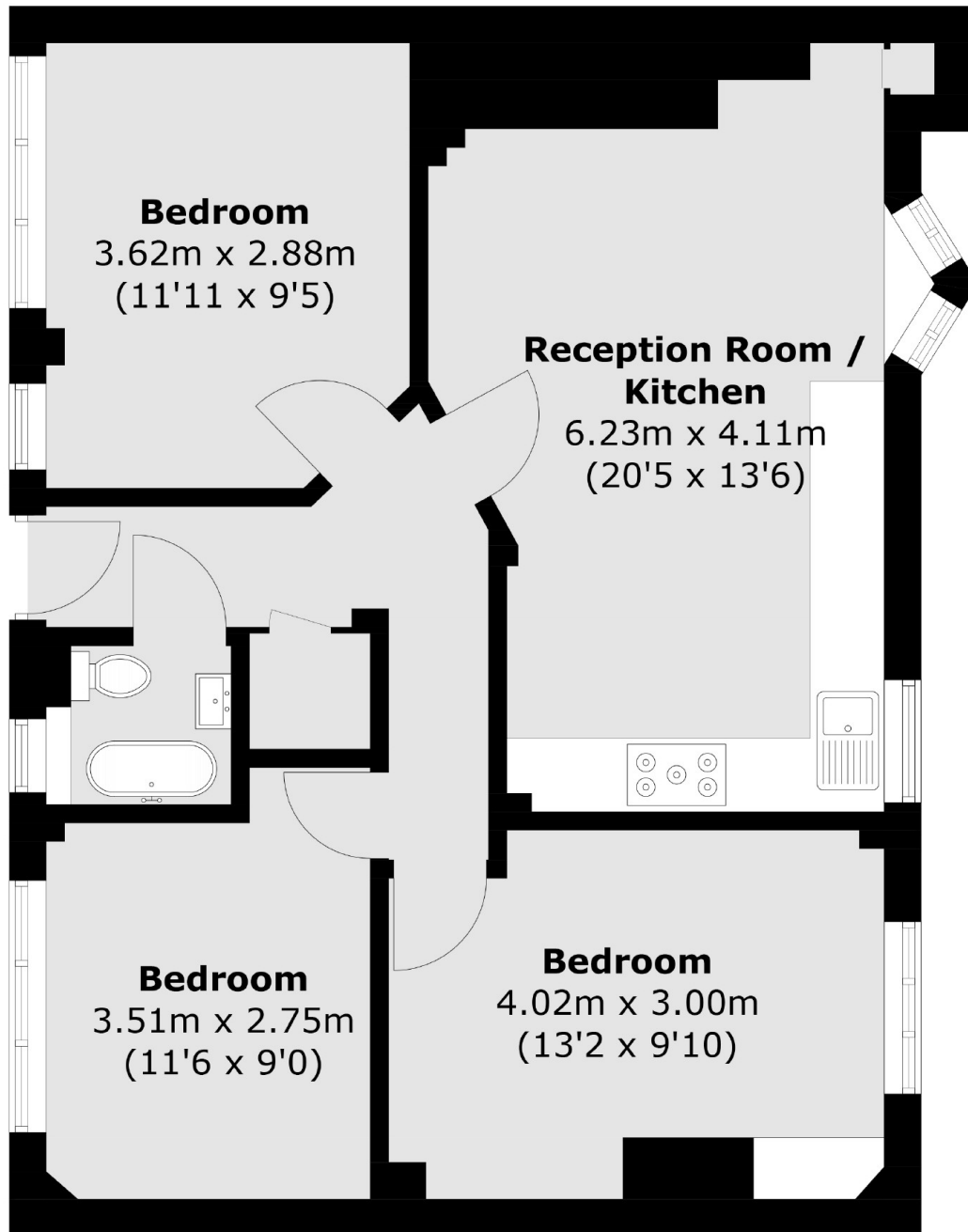
A highly attractive, west-facing and recently refurbished three double bedroom flat with a generous open plan living room and kitchen and a three piece family bathroom. Sold chain free, with permit parking available.

Dhonau House very well located, close to Bermondsey Underground and South Bermondsey Station, with excellent links into the West End, City and Canary Wharf. It is surrounded by a range of artisan delis, cafés, restaurants and trendy food markets.

Features

- Three Double Bedrooms
- Open Plan Living Room/ Kitchen
- Recently Refurbished
- Double Glazing
- West Facing
- Permit Parking Available
- Chain Free Sale

Longfield Estate, London, SE1



Total area (approx.): 64.2 sq. m (691.0 sq. ft)