



Elim Estate, SE1

£325,000

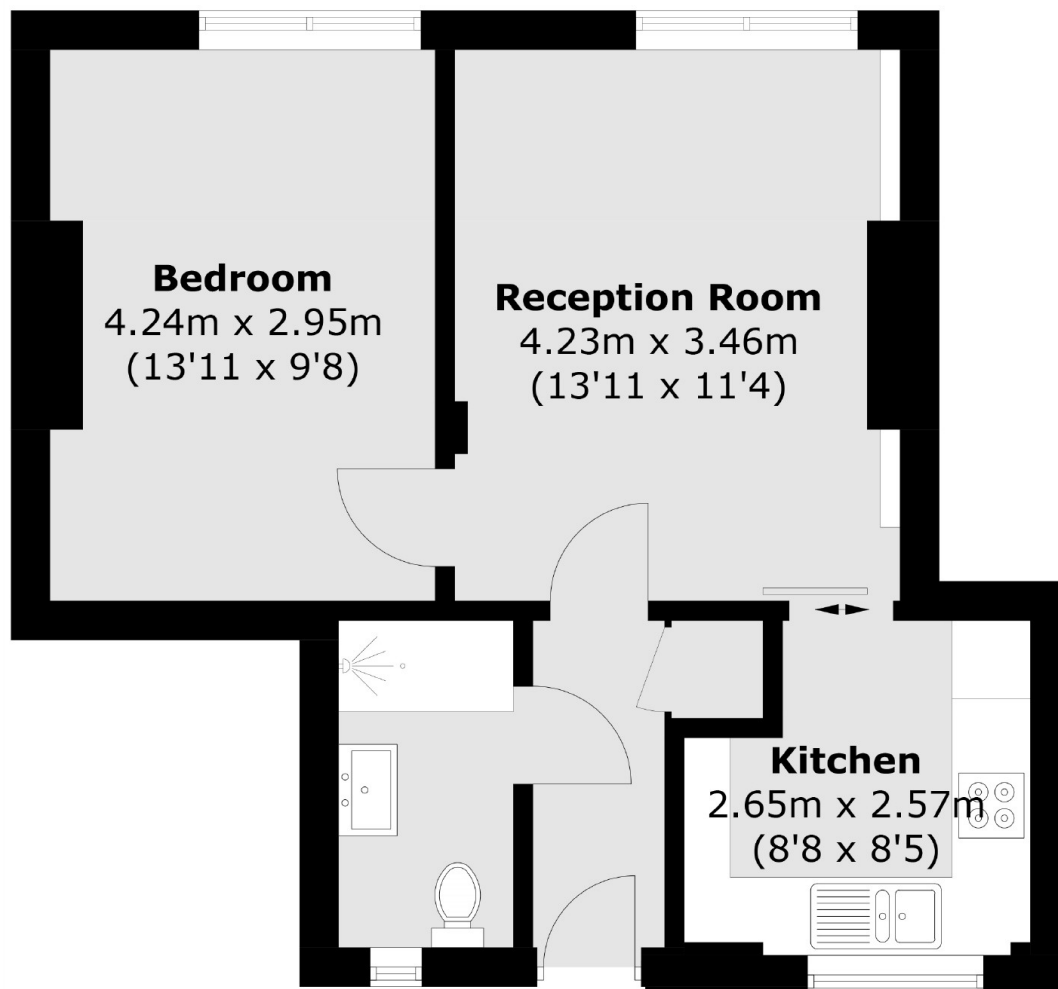
Offers in excess of £325,000. A highly attractive and fully refurbished ground floor flat with a front garden, a separate modern kitchen, a spacious living room, generous double bedroom and a high spec shower room. Permit parking is available.

Weston Street is enviably located in the heart of SE1, moments away from Bermondsey Street, London Bridge Station, the Shard and Borough Market, with excellent links across the City.

Features

Offers in excess of £325,000
Front Garden
One Bedroom
Separate Kitchen
Very Central Location
Chain Free Sale

Elim Estate,
London, SE1



Total area (approx.): 41.8 sq. m (449.9 sq. ft)

Dexters

London Bridge
54 Borough High Street
London
SE1 1XL
Sales
020 7650 5 100

Energy Rating: C. We aim to make our particulars both accurate and reliable. However they are not guaranteed; nor do they form part of an offer or contract. If you require clarification on any points then please contact us, especially if you're traveling some distance to view. Please note that appliances and heating systems have not been tested and therefore no warranties can be given as to their good working order.

 **RICS** | Regulated
Estate Agent
and Letting Agent

[dexters.co.uk](https://www.dexters.co.uk)