



Old Kent Road, SE1

£250,000

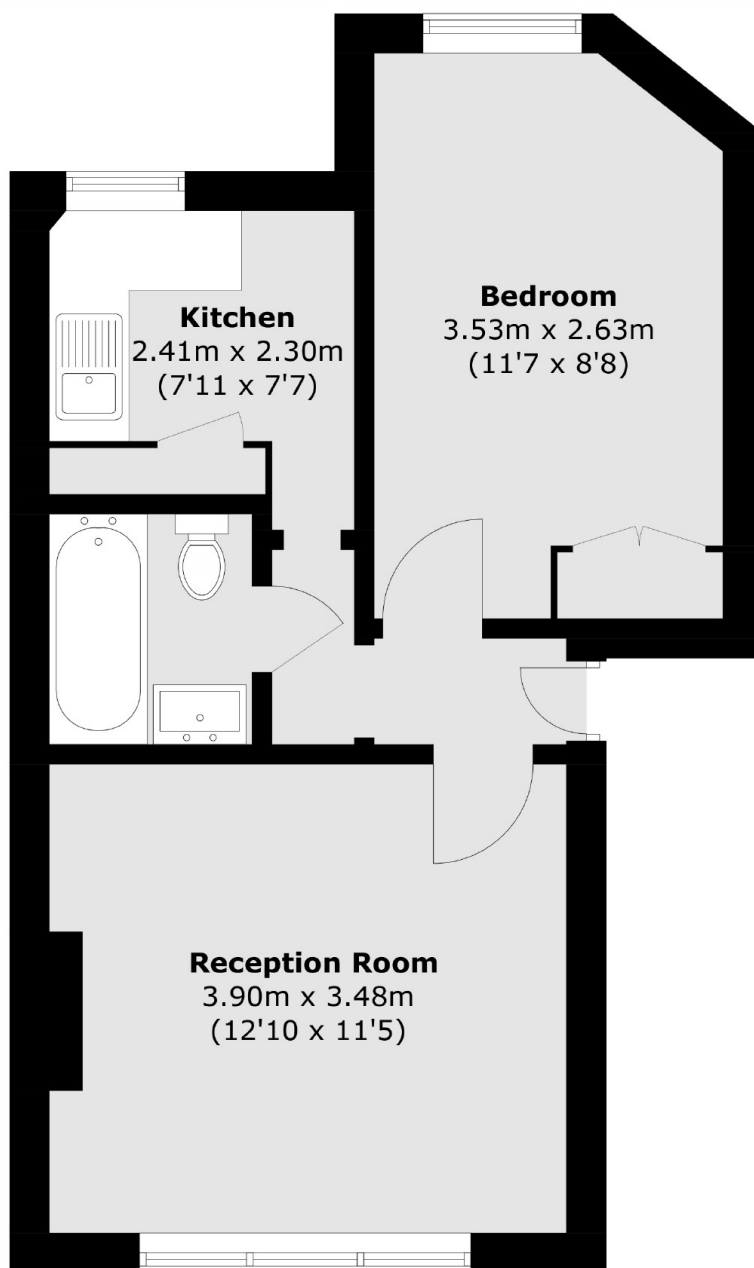
An attractive Victorian Mansion Flat, requiring refurbishment, with a separate kitchen and a large living room, a generous double bedroom and a three piece bathroom. This is a chain free sale, ideal for a first time buyer or an investor. Offers in excess of £250,000

Close by to both Borough and Elephant & Castle Stations (Zone 1) with access to the Northern Line & Bakerloo Line. There are also great bus routes into Central London and numerous amenities on your doorstep.

Features

Offers in excess of £250,000
Victorian Mansion Flat
Secure Entry
Double Glazing
One Double Bedroom
Separate Kitchen & Living Room
Excellent Transport Links
Chain Free Sale

Old Kent Road, London, SE1



Total area (approx.): 36.6 sq. m (394.0 sq. ft)