



Long Lane, SE1

£460,000

An immaculately presented one bedroom apartment, with an open plan kitchen and living room, hard wood floors, a private balcony, ample storage throughout, a three piece bathroom and a generous double bedroom. OIEO £460,000

Quastel House is enviably located just off Borough High Street, with Borough Underground, London Bridge station, the Shard and Borough Market all in close proximity, plus numerous shops, bars and restaurants.

Features

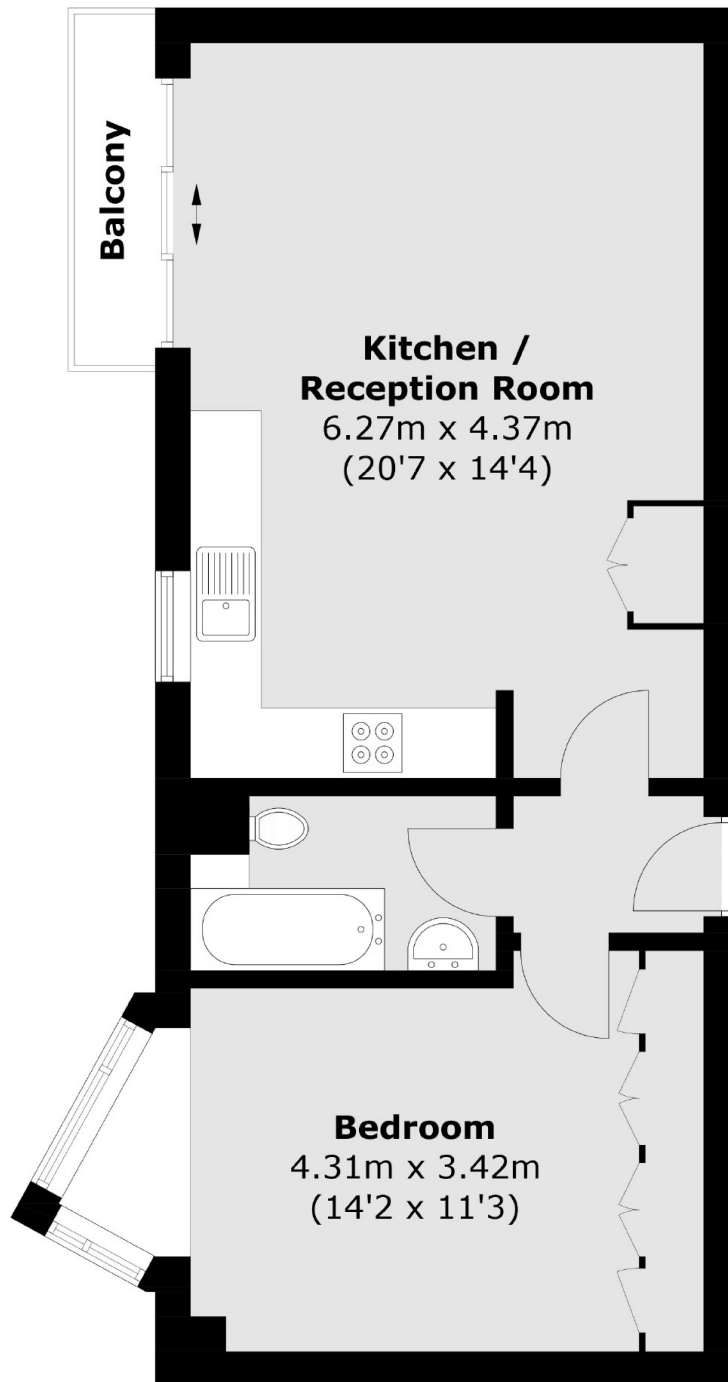
- One Bedroom Apartment
- Immaculate Condition
- Open Plan Living
- Private Balcony
- Lift Access & Secure Entry
- Excellent Transport Links
- OIEO £460,000



Long Lane, SE1



Long Lane, London, SE1



Total area (approx.): 49.2 sq. m (529.6 sq. ft)
Balcony area: 2.1 sq. m (22.6 sq. ft)

Dexters

London Bridge
54 Borough High Street
London
SE1 1XL
Sales
020 7650 5 100

Energy Rating: C. We aim to make our particulars both accurate and reliable. However they are not guaranteed; nor do they form part of an offer or contract. If you require clarification on any points then please contact us, especially if you're traveling some distance to view. Please note that appliances and heating systems have not been tested and therefore no warranties can be given as to their good working order.

 **RICS** | Regulated
Estate Agent
and Letting Agent

[dexters.co.uk](https://www.dexters.co.uk)