



Old Kent Road, SE1

£300,000

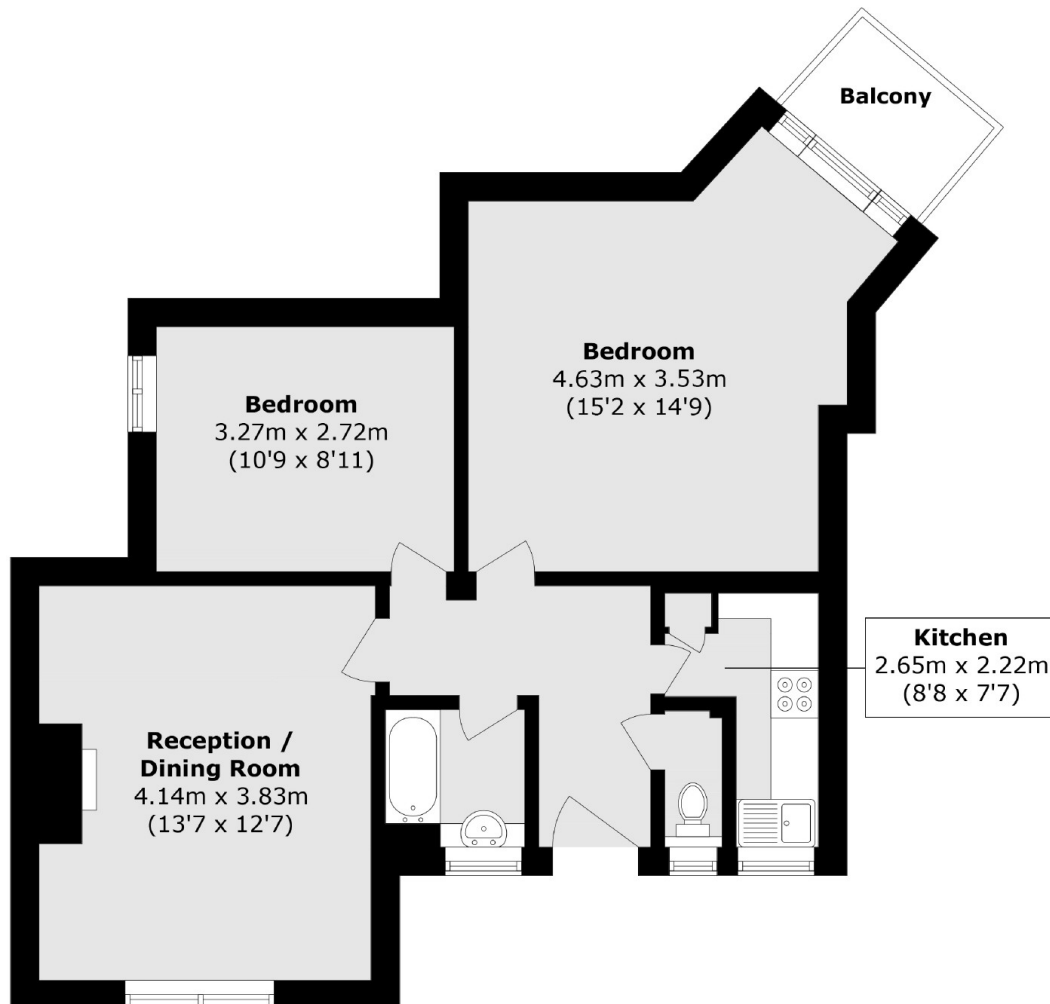
A generously proportioned third-floor flat offering a spacious living room, a separate kitchen-diner of excellent size, two well-sized double bedrooms, far-reaching city views, and ample built-in storage throughout. Offered to the market chain-free.

Mawbey House occupies a prime position opposite Burgess Park on Old Kent Road, benefiting from excellent transport links across London via nearby stations at Elephant & Castle, Bermondsey, and South Bermondsey, as well as frequent bus services into the City.

Features

- Chain Free
- Two Double Bedrooms
- Large living Space
- Separate Kitchen
- Balcony
- City Views

Old Kent Road,
London, SE1



Total area (approx.): 52.5 sq. m (565.1 sq. ft)

Total area (approx.): 2.3 sq. m (24.7 sq. ft)

Dexters

London Bridge
54 Borough High Street
London
SE1 1XL
Sales
020 7650 5 100

Energy Rating: . We aim to make our particulars both accurate and reliable. However they are not guaranteed; nor do they form part of an offer or contract. If you require clarification on any points then please contact us, especially if you're traveling some distance to view. Please note that appliances and heating systems have not been tested and therefore no warranties can be given as to their good working order.

RICS Regulated
Estate Agent
and Letting Agent

dexters.co.uk