



Hilary Mews, SE1

£1,100,000

A highly desirable duplex Penthouse Apartment, with fantastic skyline views in both directions, taking in both the London Eye to the West and the Shard to the North East, a spacious open plan living area, with a high spec modern kitchen and ample room for dining, plus two double bedrooms, two bathrooms, two balconies and air-conditioning.

Brandon House is incredibly well located for transport with local cafés and bars close by on the High Street. The popular Borough Market, Bermondsey Street, the Shard and the South Bank are all within walking distance.

Features

Duplex Penthouse Apartment
Two Private Balconies
Two Double Bedrooms & Two
Bathrooms
24 Hour Concierge
Air Conditioning
Lift Access & Secure Entry
Chain Free Sale



Hilary Mews, SE1

Brandon House is one of SE1's premier gated developments, with a very exclusive feel and a high quality finish. Benefits include a 24 hour concierge, cycle storage, secure entry and lift access.

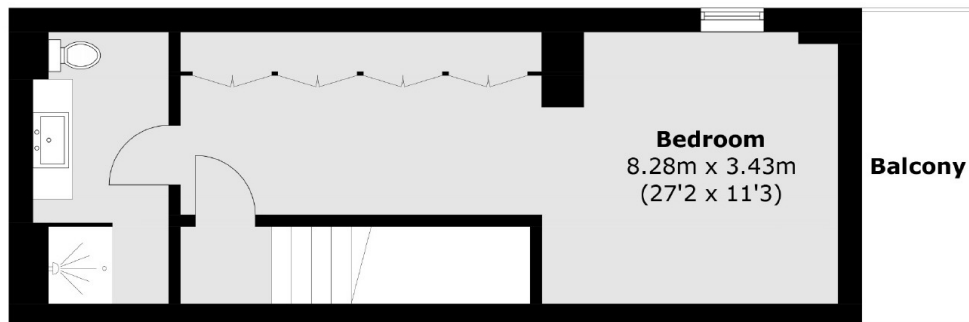
The apartment itself is stunning, with very high ceilings, large windows and plenty of natural light. There are fantastic views from both floors, taking much of the skyline including the Shard, whilst the London Eye is visible from the upper floor.

Both bedrooms are double rooms, each with very large fitted wardrobes. There are two bathrooms, including a smart en-suite bathroom, with a large shower and a second guest bathroom on the lower floor.

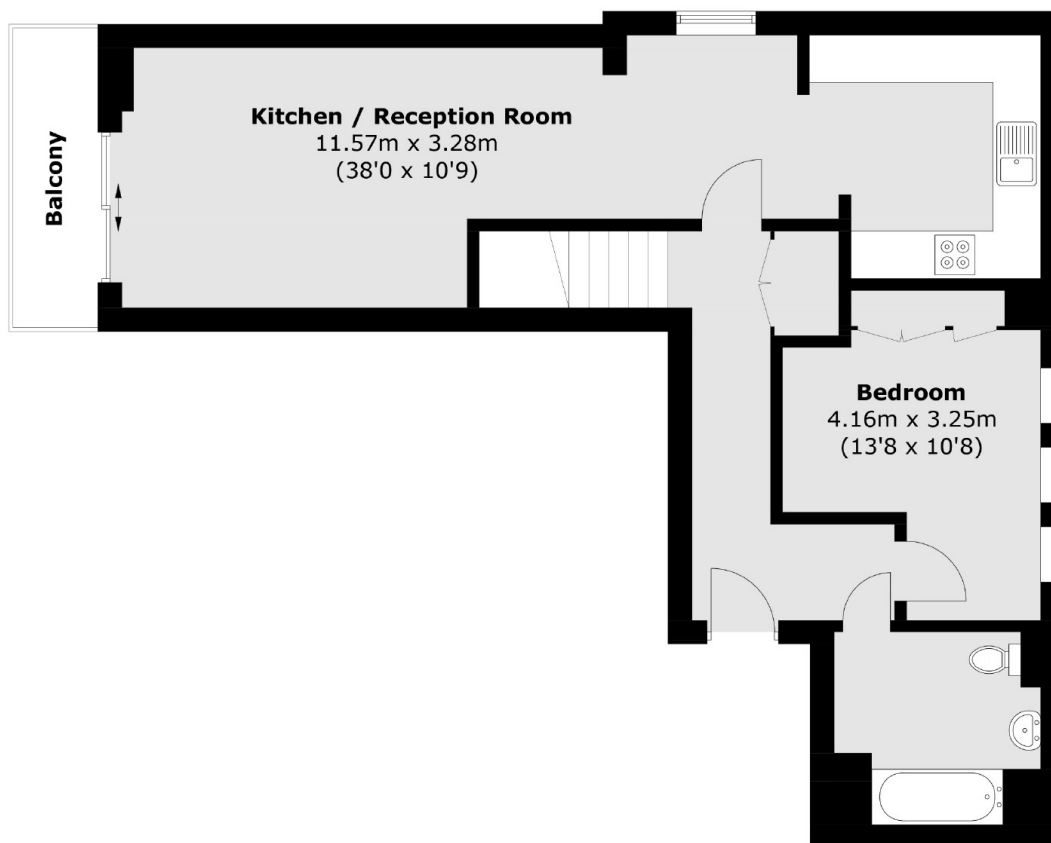
The main living space again benefits from the high ceilings and a south easterly, with a high spec modern kitchen and integrated Siemens appliances, plenty of room for dining and separate seating space.



Hilary Mews,
London, SE1



Sixth Floor



Fifth Floor

Total area (approx.): 98.0 sq. m (1,054.7 sq. ft)
Balcony: 9.7 sq. m (104.4 sq. ft)

Dexters

London Bridge
54 Borough High Street
London
SE1 1XL
Sales
020 7650 5 100

Energy Rating: C. We aim to make our particulars both accurate and reliable. However they are not guaranteed; nor do they form part of an offer or contract. If you require clarification on any points then please contact us, especially if you're traveling some distance to view. Please note that appliances and heating systems have not been tested and therefore no warranties can be given as to their good working order.

 **RICS** | Regulated
Estate Agent
and Letting Agent

dexters.co.uk