



## St. Olaves Estate, SE1

### £550,000

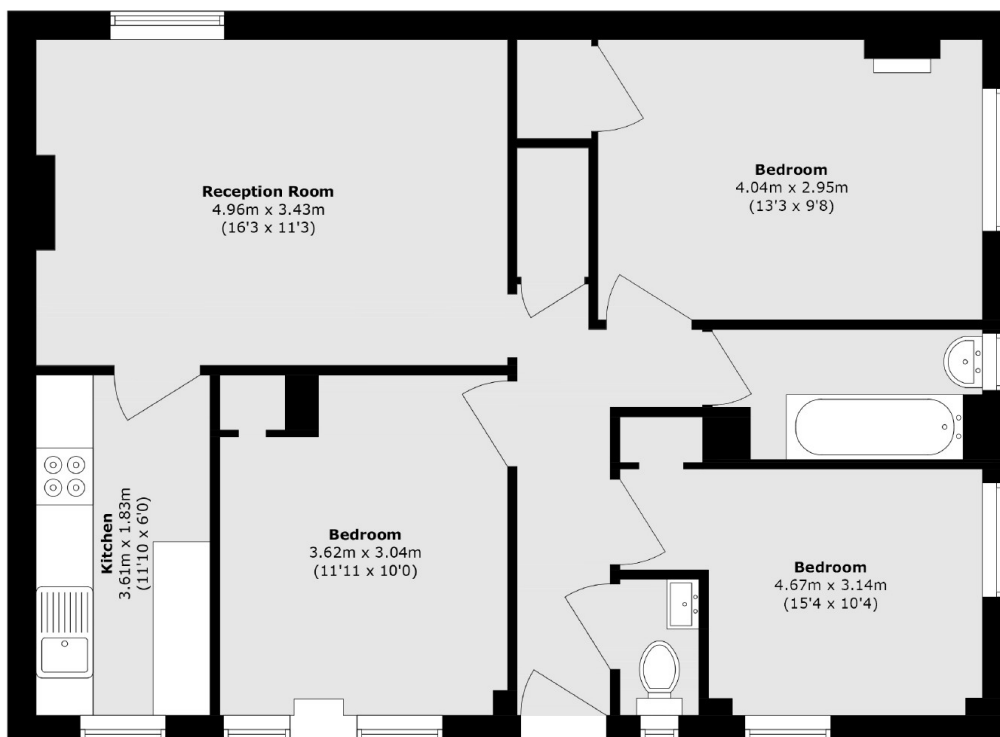
A beautifully refurbished ground-floor flat featuring a spacious living room with ample space for dining, a modern kitchen, three generously sized double bedrooms, and a contemporary family bathroom. Offered to the market chain free.

St Olave's Estate enjoys an enviable location tucked away just off Fair Street and Tooley Street, moments from the River Thames. London Bridge Station, the cobbled streets and converted warehouses of Shad Thames, and the world-famous Borough Market are all close at hand, along with an array of riverside pubs, acclaimed restaurants, and cultural attractions along the South Bank.

### Features

- Chain Free Sale
- Three Double Bedrooms
- Large Living Room
- Modern Kitchen & Bathroom
- Very Centrally Located
- Excellent Transport Links

# St. Olaves Estate, London, SE1



Total area (approx.): 70.7 sq. m (761.0 sq. ft)