



Long Lane, SE1

£1,100,000

A very rarely available south-facing Penthouse Apartment with a very large private terrace, a spacious open plan living room and fully fitted kitchen, with ample room for dining and a separate seating area, two generous double bedrooms, two bathrooms and ample built-in storage. Sold chain free, with secure, allocated parking.

The Printworks Apartments are set in the heart of SE1, moments away from London Bridge Station. Bermondsey Street, Borough Market and the Southbank are all on your doorstep, with numerous attractions, cafés, restaurants, galleries and other amenities nearby.

Features

- Penthouse Apartment
- Very Large Terrace
- South-Facing
- Two Double Bedrooms
- Two Bathrooms
- Open Plan Living Area
- Wooden Floors Throughout
- Chain Free Sale



Long Lane, SE1

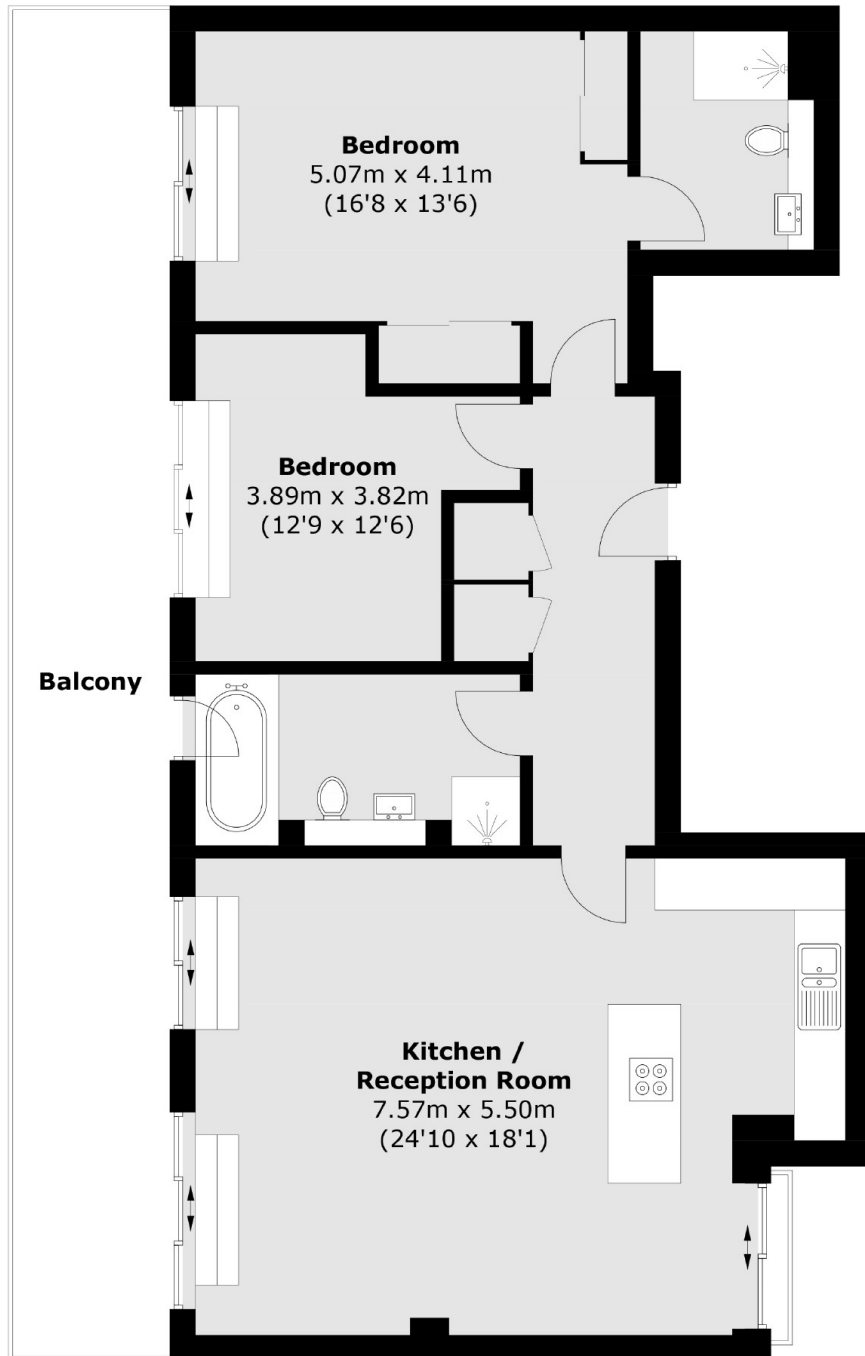
Set on the south-side of the building, with full height windows and doors, leading out onto a large south-facing terrace, this apartment is flooded with light all through the day and benefits from far reach views, over the rooftops.

There is a real sense of space throughout, with a very spacious living room and kitchen, two very generous double bedrooms and two large bathrooms, one of which is en-suite to the master bedroom, whilst the other is accessed from the hallway and benefits from both a walk-in shower and roll-top bath.

The kitchen is fully fitted with modern appliances, extensive storage, ample work surfaces and an built-in kitchen island. In addition, there is plenty of space for a large dining table and separate seating area.



Long Lane, London, SE1



Total area (approx.): 96.9 sq. m (1,043.0 sq. ft)
Balcony: 28.7 sq. m (308.9 sq. ft)

Dexters

London Bridge
54 Borough High Street
London
SE1 1XL
Sales
020 7650 5 100

Energy Rating: D. We aim to make our particulars both accurate and reliable. However they are not guaranteed; nor do they form part of an offer or contract. If you require clarification on any points then please contact us, especially if you're traveling some distance to view. Please note that appliances and heating systems have not been tested and therefore no warranties can be given as to their good working order.

 **RICS** | Regulated
Estate Agent
and Letting Agent

[dexters.co.uk](https://www.dexters.co.uk)