



## Burbage Close, SE1

£465,000

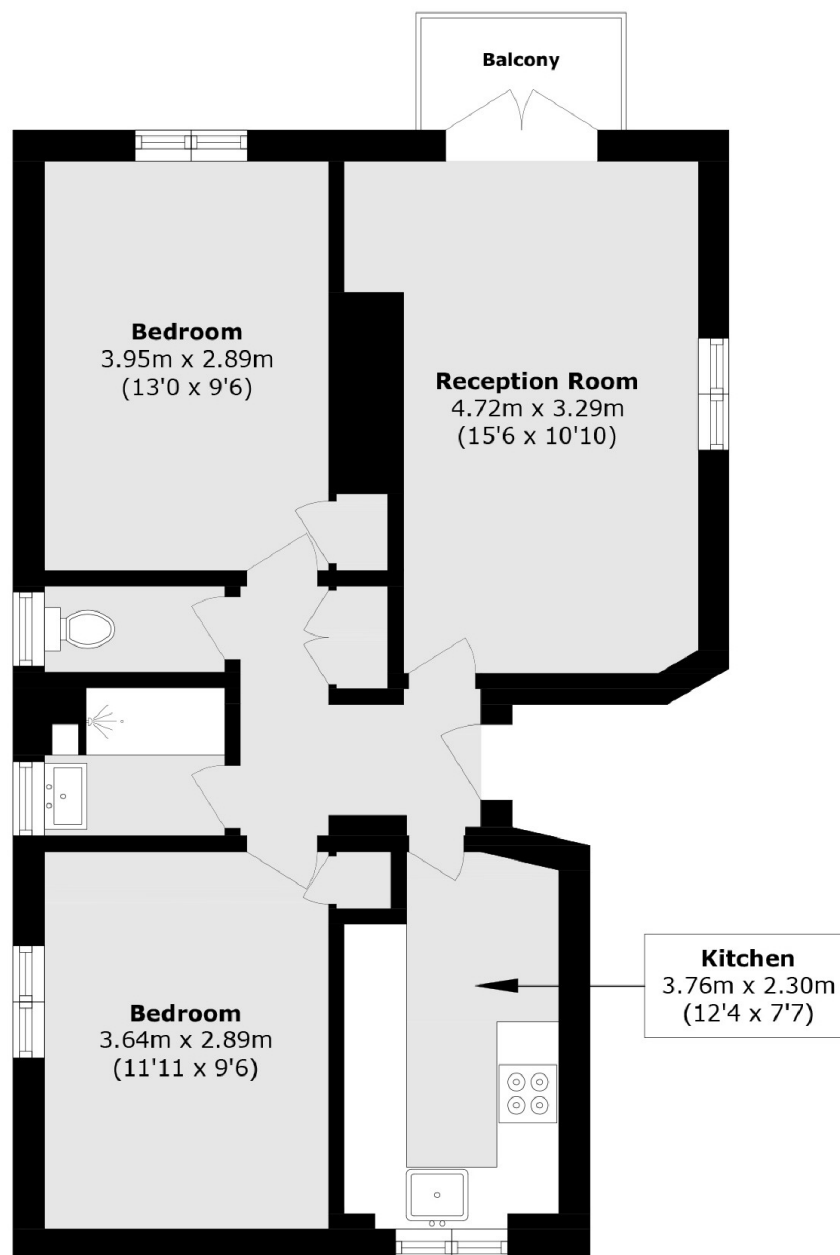
An immaculately presented and recently refurbished flat with a quadruple aspect, flooded with natural light, a spacious living room and separate fully integrated, high spec kitchen, two generous double bedrooms and a modern bathroom, plus a private balcony.

Burbage Close is incredibly well located with easy access to London Bridge and Borough Stations, the green space of Tabard Gardens, Borough Market, the South Bank and the Shard, amongst various other attractions and amenities.

### Features

- Recently Refurbished
- Two Double Bedrooms
- Large Living Room
- Separate Kitchen
- Wonderful Natural Light
- Secure Entry
- Private Balcony

# Burbage Close, London, SE1



Total area (approx.): 56.3 sq. m (606.0 sq. ft)  
Balcony area (approx.): 2.0 sq. m (21.5 sq. ft)