



Borough High Street, SE1

£1,000,000

A stylish split-level apartment completed in 2021, featuring a bright and spacious open-plan kitchen and living area perfect for entertaining, a convenient downstairs WC, two generous double bedrooms, two modern bathrooms, and a large private balcony ideal for relaxing outdoors. Offers in excess of £1,000,000.

The Calverts Buildings enjoy a prime location tucked just off Southwark Street, just moments from Borough Market and the riverside. With excellent access to the Jubilee and Northern Lines, plus the Overground at London Bridge Station, this location offers superb connectivity across London.

Features

- Offers in excess of £1,000,000
- Duplex Apartment
- Two Double Bedrooms
- Two Bathrooms
- Brand New Lease
- Low Service Charges
- Chain Free Sale



Borough High Street, SE1

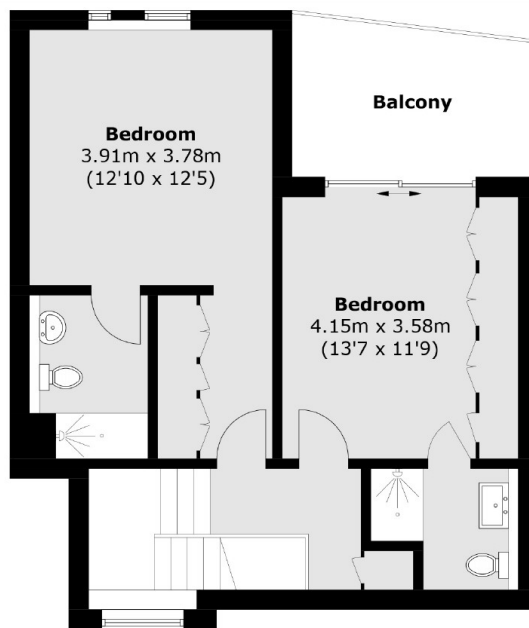
The Calverts Buildings is a boutique development of only four apartments, one town house and two offices, built to a very high specification, with under floor heating throughout, high quality fittings from its fully fitted kitchen to its two stylish bathrooms.

This apartment has a wonderful sense of space and light, with a southerly aspect and large floor to ceiling windows. The living space allows ample room for a sizeable living area, a large dining table and a generous kitchen with a breakfast bar.

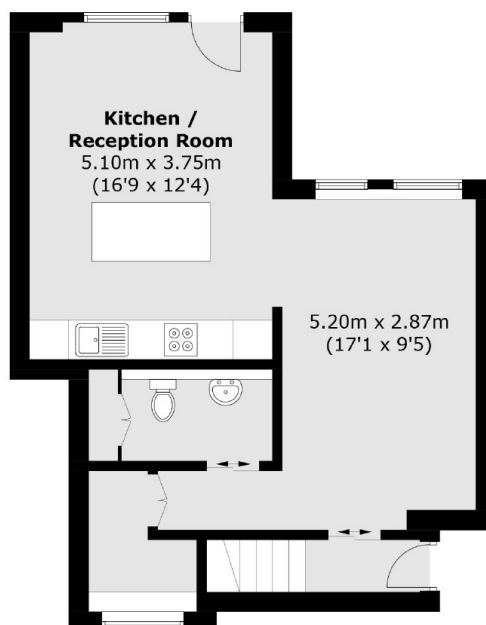
The property has only been occupied briefly and retains the feel of a new home. It is presented immaculately and would be a wonderful home or a fantastic investment. It is to be sold chain free with a brand new lease and low service charges.



Borough High Street, London, SE1



First Floor



Ground Floor

Total area (approx.): 100.3 sq. m (1,079.6 sq. ft)
Balcony : 8.4 sq. m (90.4 sq. ft)