



Great Dover Street, SE1

£500,000

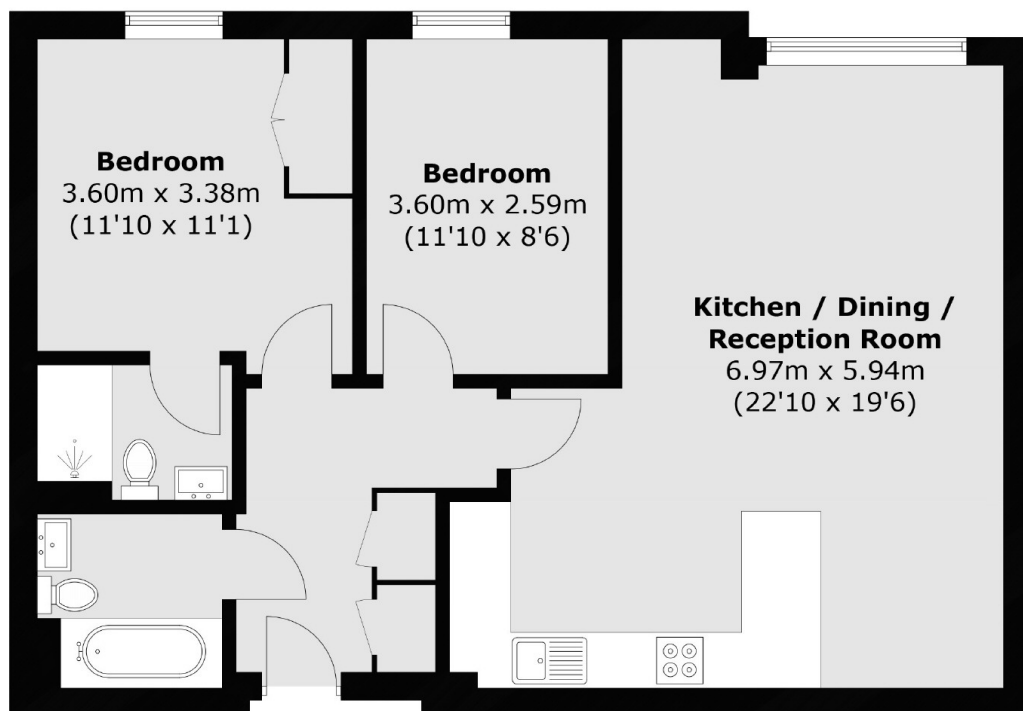
A highly attractive fourth floor flat with a spacious open plan living room and kitchen, ample space for dining and storage, plus two double bedrooms, two bathrooms and secure off-street parking. Also benefitting from an on-site gym, porter and communal gardens.

Longstone Court is 0.2 miles from Borough tube & Borough High Street, with London Bridge, Borough Market & the South Bank just beyond. There are numerous amenities on your doorstep. Access to the city is via the Northern, Jubilee or Bakerloo Line.

Features

- 4th Floor Flat
- Two Double Bedrooms
- Two Bathrooms
- Residents' Porter, Gym & Gardens
- Secure Underground Parking
- Valid EWS1 Form
- Chain Free Sale

Great Dover Street,
London, SE1



Total area (approx.): 71.1 sq. m (765.3 sq. ft)

Dexters

London Bridge
54 Borough High Street
London
SE1 1XL
Sales
020 7650 5 100

Energy Rating: B. We aim to make our particulars both accurate and reliable. However they are not guaranteed; nor do they form part of an offer or contract. If you require clarification on any points then please contact us, especially if you're traveling some distance to view. Please note that appliances and heating systems have not been tested and therefore no warranties can be given as to their good working order.

 **RICS** | Regulated
Estate Agent
and Letting Agent

dexters.co.uk