



Walworth Road, SE1

£519 Per week

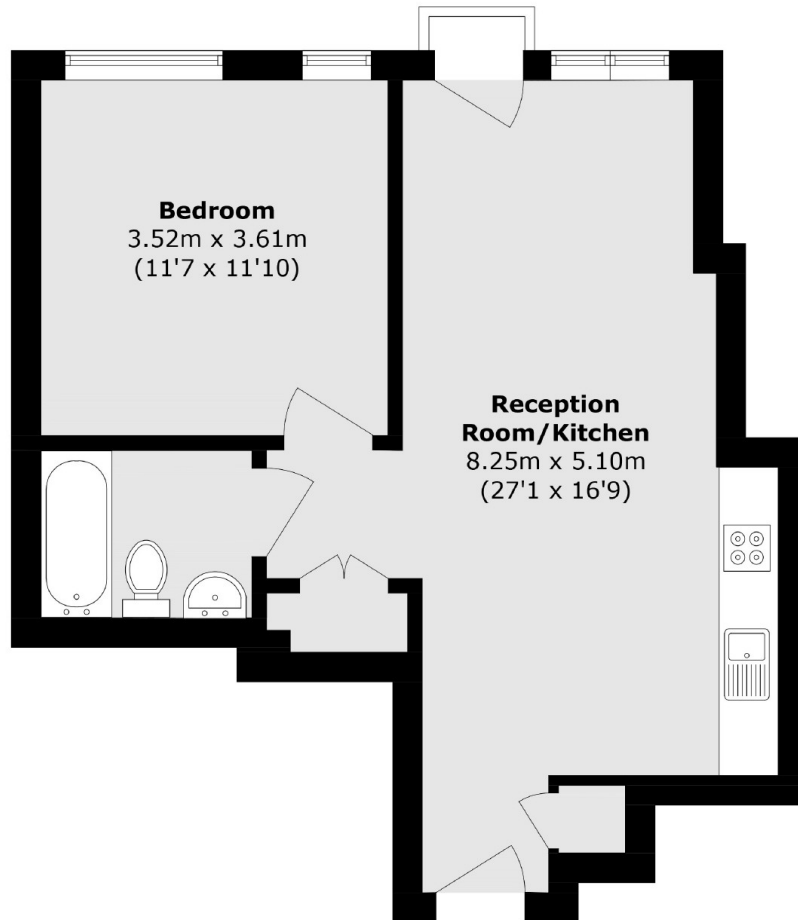
A modern One bedroom apartment, located in the sought after Strata building. This home comes with a 24-hour concierge service, great views and Large floor to ceiling windows allowing plenty of natural light.

The Strata Building is in prime location for Elephant & Castle Underground & Overground with excellent transport for buses also with links to City, Waterloo and St Pancras.

Features

- 24 Hour Concierge
- Modern Bathroom
- Contemporary Kitchen
- Wooden Flooring
- One Double Bedroom

Walworth Road, London, SE1



Total area (approx.): 46.3 sq. m (498.3 sq. ft)